

Eddie Bauer EST. 1920
PO Box 7001, Groveport, OH 43125

Printed in USA

Prices expire 4/7/13

PRSRT STD
U.S. POSTAGE
PAID
EDDIE BAUER



Caring for the environment is one of our core values. The paper in this catalog is certified to contain fiber from responsibly managed sources. Please pass this catalog on or recycle it.

THE MOUNTAIN STILL DECIDES

In 1963, Jim Whittaker became the first American to climb to the roof of the world and summit Mt. Everest in partnership with Sherpa Nawang Gombu. He did it outfitted in Eddie Bauer down. On that same expedition, team members Lute Jerstad and Barry Bishop summited via the South Col Route, while climbers Tom Hornbein and Willi Unsoeld completed the first summit of the daunting West Ridge Route. All four were forced into the highest unplanned bivy in the history of mountaineering, and they survived due to their Eddie Bauer down. We tell the full story in the next Outfitter Book.



2012

EST. 1920
Eddie Bauer



**FREE
SHIPPING**

ON YOUR PURCHASE
SEE INSIDE FOR DETAILS

2013 OUTFITTER BOOK: VOLUME 3, NO. 1

- + FACING THE DOLOMITES + TRAVEX TECH + ICELAND TO OUTBACK
- + SHACKLETON'S FOOTSTEPS + HEART OF MONGOLIA + FAMILY IN INDIA
- + FEATURED INTERVIEWS: KENT MCBRIDE + CAROLINE GEORGE + RICHARD WIESE

**ADVENTURE
TRAVEL ISSUE**

LIVE YOUR ADVENTURE

FOLLOW OUR TEAM OF GUIDES, ATHLETES, AND ADVENTURE TRAVEL GUIDES TO THE FARTHEST CORNERS OF THE GLOBE TO EXPERIENCE INVITING CULTURES, SEE STUNNING LANDSCAPES, AND UNEARTH EPIC STORIES

These days, the world seems like a very small place. But as our team of guides, athletes, and adventure travel guides can testify, the power of travel has never been more potent and critical to our understanding of humanity. Whether it's the cultural interaction or the insight from a new perspective, the simple act of travel takes us places we could rarely predict. It helps us see the world through new eyes and connects us across cultures, beliefs, nationalities, and time zones. Travel is adventure in its most visceral form.

Our world-class team of guides, athletes, and adventurers has logged more than a few air miles to remote destinations in their lifetimes. They've climbed peaks, traversed remote islands, tracked rare beasts, and landed deep in the middle of foreign cultures, finding only friendship and hospitality. For us, the stories they bring back provide us with the motivation to book a flight to an exotic destination and to explore.

In the pages of our Spring Outfitter book, we've gathered their most memorable adventure travel stories, ranging from seasonal escapes to Baja and Fiji to life-altering interactions in places as remote as Kenya, Mongolia, and Iceland. We hope that

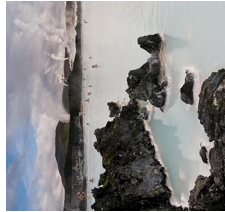
hearing their stories will ignite in you that same spark to pack up and hit the road, board a plane, or go on a personal walkabout, and experience what the world truly has to offer our adventurous souls.

TO READ MORE ABOUT OUR ADVENTURE ETHIC, GO TO BLOG.EDDIEBAUER.COM



4 SIX CLASSIC NORTH FACES

Eddie Bauer First Ascent guide Caroline George completes her mission to climb the six classic north faces with an ascent of the Cima Grande di Lavaredo in South Tyrol.



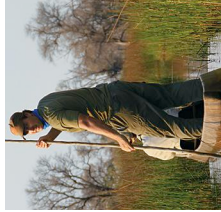
18 ICELANDIC EPIC SAGAS

Iceland is a land of storytellers, and Richard Wiese creates his own epic as he journeys to a stark landscape on a volcanic island of Viking heritage to herd sheep, eat shark, and explore.



30 THE SHACKLETON TRAVERSE

Dave Hahn follows in the footsteps of one of history's greatest adventure epics when he retraces the desperate steps of Shackleton, Worsley, and Crean across South Georgia Island.



14 A MAN ON A MISSION

Traveling with a nobility of purpose is the stated mission of *Born to Explore* host and new Eddie Bauer Adventure Travel Guide Richard Wiese, who is always up for a new adventure.



24 TRAVEL JUNKIE JOURNALISM

From eating fried guinea pig to running with the bulls, travel junkie journalist and new Eddie Bauer Adventure Travel Guide Julia Dimon savors hundreds of cultural moments.



34 MONGOLIA MARE'S MILK

Trekking through the ancient land of Genghis Khan, Eddie Bauer First Ascent guide David Morton mixes the mare's milk while experiencing nomadic hospitality yurt by yurt.



36 WATER TOWER STORIES

Jake Norton has traveled the globe on a mission to climb the world's 21 biggest peaks for clean water, but not until he journeyed to Kenya did he taste the true heart of Africa.



44 BAJA STANDUP SESSIONS

After a long winter in ski boots, Eddie Bauer First Ascent guide Lel Tone points the camper south to Baja to enjoy sun, sand, Tecate, and more than a few standup sessions.



OUR CREED TO GIVE YOU SUCH OUTSTANDING QUALITY, VALUE, SERVICE AND GUARANTEE THAT WE MAY BE WORTHY OF YOUR HIGH ESTEEM.™

OUR GUARANTEE EVERY ITEM WE SELL WILL GIVE YOU COMPLETE SATISFACTION OR YOU MAY RETURN IT FOR A FULL REFUND.™

READ THE FULL STORY

Experience deeper immersion in powerful narratives of the global adventures of our guides, athletes, and friends on the **NEW** Eddie Bauer Live Your Adventure Blog. BLOG.EDDIEBAUER.COM

ON THE COVER Cirque of the Unclimables, Northwest Territories, Canada. Photographer: Ben Ditto

FACING THE DOLOMITES

✓ Caroline George
and Kent McBride
on approach to the
Rifugio Lavaredo, in
front of the Tre Cime
in the Dolomites, Italy

When Caroline George climbed four of the six classic north faces of the Alps in one five-month stretch during 2003, a goal she had never envisioned was within her reach. Summiting all six of the classic north faces of the Alps was an objective first completed by Gaston Rébuffat in the 1930s and made famous in his book *Starlight and Storm*, but the accomplishment gained a personal resonance with George because of her father's appreciation for the history of European alpinism. But ticking off the final two—the Drus and the Cima Grande di Lavaredo—was not in the cards for George during 2003 due to the condition of the routes.

During the next seven years, the Chamonix-tested climber took a different route that led her to a stint in the States and down the path to earning full IFMGA guide certification. George returned to the six classic north faces, completing an ascent of the north face of the Drus in 2010 and a one-day ascent of the Eiger north wall with her husband Adam George in 2011. She was one Italian summit away from reaching her goal, but decided to embrace the challenge

of becoming a new mother, and her ambition was put on hold for one more season.

In 2012, with her husband on child-care duty, George returned to the Dolomites with Kent McBride and H.P. Gubler to complete the personal challenge of the six classic north faces with a 20-hour roundtrip car-to-car climb of the 9,839-foot Cima Grande di Lavaredo in the South Tyrol region of the Dolomites. Known for steep, overhung limestone, unpredictable weather, and deeply entrenched alpine hut culture, the climb moved forward with a three-person, multi-pitch climb up 550 meters of minimally bolted steep rock that was a virtual museum of piton protection with rusted Lost Arrows still remaining on a route first climbed in 1933 by Emilio Comici and the Dimai brothers.

After a successful 19-pitch climb, the team rappelled to a pizza in the friendly Italian atmosphere of the Lavaredo hut and returned via a 10-hour drive through the Alps. "I think that's just what life is about," George says. "You set goals for

yourself and then you go get them to give purpose to what you do."

But the biggest challenge for George was the logistics of new motherhood that included enlisting her husband to watch their six-month-old daughter and packing a breast pump on the climb. "Being a mom makes me more efficient, I have goals, I see those goals and do everything to make them happen," says George. "I'm almost more psyched to have pulled off the logistics of the Cima Grande climb than if I had completed all the classic north faces in a six-month time frame."

"Your freedom is your life and you can only be a good parent by having perspective," George concludes. "If you are really passionate about something, I think you ought to show that side of yourself too."

“YOU SET GOALS
FOR YOURSELF,
THEN YOU GO
GET THEM TO
GIVE PURPOSE
TO WHAT YOU
DO.” —Caroline George

PHOTOGRAPHER: DAN PATIUCU

Read Caroline's full report on the six classic north faces on the Live Your Adventure blog at blog.eddiebauer.com.



» Italian accommodations at Rifugio Lavaredo near the base of the Cima Grande, Dolomites, Italy

“THE SIX CLASSIC NORTH FACES HAVE A HUGE HISTORICAL RESONANCE BECAUSE BACK IN THE 1930S, PEOPLE WERE STARTING TO CLIMB BIGGER FACES AND IT WAS NO LONGER THE GOAL JUST TO DO A CLIMB, JUST TO GET TO THE SUMMIT—IT WAS ABOUT CLIMBING THE HARDEST WAY. AND, BACK IN THOSE DAYS, THE GEAR THEY HAD MADE ALL THESE FACES SUPER CHALLENGING.” —Caroline George



» Kent McBride, classic lead on limestone, via the Comici-Dimai route



» Sorting modern gear at the base of a route called a virtual museum of historical pro

PHOTOGRAPHY: Dan Patlucci



[MEN'S] EUROPEAN ALPINISM

[1] ALCHEMIST 40L PACK

2012 *Outside* magazine's Gear of the Year Award winner. Expands from 40 to 55 liters. 210-denier triple ripstop and 420-denier double ripstop nylon. Patent pending. See Best in Class (page 48) for full details. C23 122 1793

\$199

[2] GUIDE PANTS

These versatile, wicking, all-season pants stretch, shed moisture, and breathe in the field. UPF 50. Nylon/spandex. REG 30, 33 (INSEAM 30", 32") REG 32, 34 (INSEAM 30", 32", 34") REG 36, 38 (INSEAM 32", 34") B29 122 0635

\$69.95

[3] BC-200 HARD SHELL JACKET

Revolutionary full protection that weighs less than 11 oz. WeatherEdge® Pro ripstop nylon with StormRepel® DWR finish is waterproof and breathable to 20K/25K. Thermaweld® seam construction reduces bulk. Integrated, helmet-compatible hood. Ergonomic pockets.

REG S-XXL B88 122 0189 **\$199**
TALL M-XXL B88 122 0190 **\$219**

[4] SUUNTO® CORE WATCH

Features include altimeter, barometer, compass, depth meter, digital thermometer, and storm alarm. Water-resistant to 10m. Lightweight plastic case; elastomer strap. N22 122 3048

\$299

[5] FIRST ASCENT FLEXBAND TRUCKER HAT

Flexible band customizes fit. S/M; M/L. A41 122 0022

\$24.95

[6] LA SPORTIVA® XPLORER MID-GTX HIKING SHOES

Technical midweight, with breathable mesh upper. Gore-Tex® Extended Comfort lining. Vibram® rubber sole. Sizes 8-12, 13. A19 122 2964

\$180

[7] HANGFIRE® JACKET

See page 33.

THE BACON PACK

LIGHT, FAST, AND COMPRESSIBLE FUNCTION FOR FINAL SUMMIT PUSHES

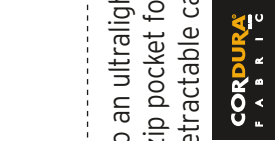


BACON PACK

This 28L technical summit pack design pares weight down to an ultralight 650 grams for fast ascents and summit pushes. Packs into zip pocket for easy stowage. Removable waist belt sheds excess weight. Retractable cable loops for tools. 210-denier triple ripstop nylon, reinforced with silicone-coated, diamond ripstop CORDURA® nylon.

C23 122 1855

\$99.95



INTERVIEW

KENT MCBRIDE

LONGTIME JACKSON-BASED IFMGA/UIAGM GUIDE, WHO AIMS TO SOMEDAY SKI AND CLIMB WITH CLIENTS IN ALL 40 TIME ZONES

» WHAT MAKES THE BACON PACK SUCH A GOOD PIECE OF GEAR FOR A CLIMB LIKE THE CIMA GRANDE YOU DID WITH CAROLINE IN THE DOLOMITES?

I really like this pack because it's light and it doesn't have a whole lot of bells and whistles. But yet, if I need to strap some waterproof clothes on the back in nice weather, I can still make a small pack seem like a bigger pack or stuff it into its top pocket and strap it on my harness when it is empty. It just fits that whole light-and-fast alpine style with the huts and the trams. You don't need to carry as much in the Alps, and so you just need a little pack and you're able to do more in a day by being lighter. Then you can bring that home to your cragging area, and be lighter and faster to move better.

» WHAT DESIGN ELEMENTS PROVIDE THAT WHOLE THEME OF LIGHTWEIGHT TRAVEL AND LIGHTWEIGHT CLIMBING?

Well, the way it's built. It rides really

well when you're climbing because, a small guy like me, if I put too much weight on me, my performance in climbing goes way down. But then if you throw a rack in it and a rope in it to get to the base, just by a little creative packing, you can make it feel like a normal pack and it'll ride nice in the middle of your back and on your hips. It carries a hefty load really well for its size when you pack it right and pad it with your extra clothes.

» IN ADDITION TO THE DOLOMITES, WHERE ELSE HAS THAT PACK EXCELLED?

I've used it guiding on the Matterhorn and it's ideal. So often in guiding, I end up carrying the rope coiled around my head and through one arm, so it's not in the pack. But then I can still have all my other gear packed inside. You can still carry an ax and crampons, and you're wearing your clothes for the most part because you're up high and not adding too many other layers. The Bacon carries all that stuff well, and I'm excited to build one that could carry the skis or the snowboard for the day climbs.

» WHAT'S THE SIGNIFICANCE OF BACON AS THE NAME?

It just makes everything better. I had to laugh about it because the name came from some of our past product development meetings, where we've gotten together and been trapped inside all day. We start off cooking up a whole bunch of bacon and eggs, and it's always amazing how much bacon was getting consumed. People hear that name and they kind of laugh and shake their heads. But then you start saying, well, "Isn't everything a little better with bacon?"

Read the full interview with Kent at blog.eddiebauer.com



IF YOU'RE REALLY
PASSIONATE ABOUT
SOMETHING, YOU
OUGHT TO SHOW
THAT SIDE OF
YOURSELF TOO. ”

—Caroline George

PHOTOGRAPHER: Dan Pallucci



APPROACHING THE HUT

**[1] MERRELL® BARE ACCESS
ARC 2 SPORT SHOES**

Synthetic and mesh upper. Merrell Float midsole keeps you in touch with the ground. Vibram® rubber sole. Machine washable. Sizes 6-10, 11.
B20 122 5563

\$90

[2] SUUNTO® M4 WATCH

Provides an ideal weekly workout schedule and automatically adapts to any changes in routine. Includes Suunto Dual Comfort Belt; compatible with most gym cardio equipment.
C22 122 3473

\$149

[3] ARCLITE - LARGE PACK

An Ed Viesturs/Peter Whittaker brainstorm, this traditional top loader serves as the perfect utility pack for everything from long treks and rough scrambles to hauling heavy loads of climbing hardware. Top lid organizer with three zippered guide pockets stows critical items. Durable 420-denier TPU-coated double ripstop and 210-denier triple ripstop nylon. Delrin® compression rods. Hydration sleeve and portal.
C23 122 1881

\$169

**[4] TRULY STRAIGHT
STAYSHAPE® JEANS**

Exclusive denim softly stretches, slims, and retains its shape. Sits below natural waist; straight through hip, thigh, and leg. For a more fitted look, order one size down. Cotton/polyester/spandex. Average inseam: 33".
REG 0-20 B11 122 4252

\$69.95

[5] MOTION CAMI

Breathable, durable, comfortable. Sliding back straps make movement easy. Built-in shelf bra. Nylon/spandex.
REG XS-XXL B31 122 0116

\$49.95

[WOMEN'S]

[6] MICROTHERM™ DOWN VEST

Thin, light, and compressible. 800 fill Premium European Goose Down. Nylon/polyester/spandex. StormRepel® DWR finish.
REG XS-XXL B89 122 0736
PETITE XS-L B89 122 0737
TALL S-XXL B89 122 0738

\$119

\$119

\$139

**[7] TRAVEX® INFINITY
BUTTON-UP SHIRT**

Moisture-wicking. Roll-tab sleeves. UPF 30+. Polyester/spandex.

REG XS-XXL B31 122 0460

\$59.95

PETITE XS-XL B31 122 0461

\$59.95

TALL M-XXL B31 122 0462

\$69.95

HYBRID TECHNOLOGY

HARD SHELL PROTECTION PLUS SOFT SHELL LIBERATION FOR THE BURLIEST CLIMBS



**ULTRA-BREATHABLE
COCONA® 2.5-LAYER SHELL**
Seals out weather on hood,
shoulders, hem, and sleeves

**HINGE-STYLE
HOOD**
Helmet-compatible
and adjustable;
interior collar
seals in heat

**YKK®
WATERPROOF
ZIPPERS**
Streamlined and
leakproof

**LIGHTWEIGHT
SOFT SHELL**
Breathable, with
StormRepel® DWR finish

FRONTPOINT 2.0

This second-generation alpine climbing jacket elevates hybrid construction to the next level. The fusion of Cocona 2.5-layer hard shell waterproof protection in critical areas, plus breathable, flexible soft shell material in the body, makes this a perfect piece when moving fast on approach or descent. StormRepel DWR finish. Rated 20K/45K. Nylon/Cocona polyester.

[1] WOMEN'S
REG XS-L A89 122 0725

\$229

[2] MEN'S

REG S-XXL A88 122 0552
TALL M-XXL A88 122 0553

\$229

\$249



RHUBARB

[1] WOMEN'S
FRONTPOINT 2.0



NECTAR

[2] MEN'S
FRONTPOINT 2.0



INTERVIEW

CAROLINE GEORGE
FULLY CERTIFIED IFMGA GUIDE,
WHO HAS CLIMBED THE NORTH
FACE OF THE EIGER IN A DAY

» WHAT DO YOU LIKE MOST ABOUT THE PERFORMANCE OF THE FRONTPOINT 2.0?

I really like how light and compact and simplistic it is. It's superlight and very breathable, but at the same time you can go for a long run in the rain and it will keep all the moisture out. It kept me dry because it's waterproof in the areas where you need to be waterproof. I like how it fits on my head with or without a helmet and I really like the color and the style—the combination of the orange and pink—I think it's very becoming. I would buy this jacket just because of the color.

» FROM A PERFORMANCE STANDPOINT, WHY DOES THE COMBINATION OF SOFT SHELL AND HARD SHELL PERFORM WELL WHEN CLIMBING?

It's a big asset because to go climbing, you have to do a big approach and this jacket is super-versatile in that it keeps you dry in wet weather. When we were in the Dolomites, we encountered probably the most wet and cold conditions I've ever encountered in my life, so we were frozen to the bone.

But at the same time, with this jacket, I was able to stay dry throughout doing a lot of aerobic exercise. With the jacket, we went running in the rain and I never felt any moisture coming inside because the hard shell kept me dry, and that combination in the right places makes this jacket unique and super high performance.

» WHY HAS FIRST ASCENT KEPT A FOCUS ON MAINTAINING THE LEVEL OF TECH DESIGN IN THE WOMEN'S PRODUCTS?

It's pretty specific to First Ascent because we're giving them inputs on women-specific products and what we're saying is really heard. And from speaking with friends who have other sponsors and attend other meetings, it's not implemented the way it is with First Ascent. I think it's really unique—both the technicality and the colors overall.

» A UNIQUE COMBINATION OF PERFORMANCE AND STYLE? Yes, exactly. Exactly. Exactly.

Read the full interview with Caroline at blog.eddiebauer.com

IT IS SUPER LIGHT, VERY BREATHABLE, AND AT THE SAME TIME YOU CAN GO FOR A LONG RUN IN THE RAIN AND IT WILL KEEP ALL THE MOISTURE OUT. I WOULD ALSO BUY THIS JACKET JUST BECAUSE OF THE COLOR. 🍷 —Caroline George

INTRODUCING **EDDIE BAUER ADVENTURE TRAVEL GUIDE**

RICHARD WIESE

MEET A MAN WHO HAS TRAVELED THE GLOBE IN SEARCH OF SCIENCE, THWARTED DANGER, AND FOUND RARE CULTURAL IMMERSION ON ALL SEVEN CONTINENTS

From the first time he climbed Mt. Kilimanjaro with his father at age 11, Eddie Bauer Adventure Travel Guide Richard Wiese has been drawn to the power of exploration.

In the years since, Wiese has traveled the globe in pursuit of science, cultural discovery, and the transformative power of personal interaction as a guidebook author, a journalist for publications such as *The Huffington Post*, and as the Emmy-nominated host of the *Born to Explore* television series on ABC. His travelogue has included missions that range from bioprospecting for extremophiles in the crater of Mt. Kilimanjaro, where he discovered 29 new species of life, to working with Chilean horse whisperers, experiencing Aboriginal ancestral rituals in Australia's Northern Territory, and tracking polar bears while examining climate change with the Inuit.

"I like to have a nobility of purpose or a mission in everything I do," Wiese says when asked what defines an evangelical style of travel that has taken him to unpublicized corners of all seven continents and earned him a term as the youngest president of The Explorers Club. In the last year alone, Wiese has journeyed to at least sixteen countries—

including Botswana, Belize, Canada, Chile, Morocco, England, Cypress, Australia, Tanzania, Uganda, Rwanda, and Iceland—to introduce his viewers to destinations, discoveries, characters, and cultures that rarely appear in a *Lonely Planet* guidebook.

In any episode of *Born to Explore*, Wiese can be seen fusing science, travel, and storytelling against a backdrop of exotic locations that range from Morocco's Atlas Mountains, where he became the first foreigner to visit an isolated nomadic village, to the Northern Territory of Australia, where he foraged in the Melville Islands and tracked the creation myth of the Rainbow Serpent with members of the oldest continuous culture on earth. But the next destination is the one Wiese is always the most excited about, and this season he plans to unearth new stories of adventure in locations such as South Africa, India, and Turkey.

"I think the world still has magic left in it," Wiese summarizes. "It's an exciting place that is not just about animals or adventure; to me, the possibilities seem limitless. There are so many off-the-chart events going on, on a daily basis around the world that you'll never hear about, that it just makes me so excited to continue to travel and highlight them."

Read more about Richard's travels to Botswana, Australia, Iceland, and Morocco at blog.eddiebauer.com

PHOTO: Courtesy of Richard Wiese

TRAVEX

MADE FOR TREK & TRAVEL

Eddie Bauer Travex is our exclusive series of gear and apparel made for trekking and traveling. Built by our adventure guide team – with their decades of experience exploring the globe – every item is engineered to perform and ready for adventure.

- UPF
- SECURE POCKET
- QUICK DRY
- EASY CARE
- PACKABLE
- BREATHABLE

CHECK OUT OUR EXCLUSIVE TRAVEX SERIES AT EDDIEBAUER.COM AND EDDIE BAUER STORES.

SHOP NOW TO SCORE THE BEST SELECTION AND AVAILABILITY.

◀ Wiese, in the reeds, stalking wildlife in the Okavango Delta, Botswana, Africa

TRADITIONS OF MOROCCO

ADAPTABLE COMFORT FROM THE MARKETS OF MARRAKESH TO THE ATLAS MOUNTAINS

» "Morocco is off-the-charts exotic," Wiese says. "It's movie-star fancy, and then it has dye pits like in biblical times." He visited the ancient dye pits in Morocco's preserved medieval capital of Fez, where he stood waist-deep in pigeon droppings to work leather in the traditional style. Then he tasted tajine, the exotic ras el hanout-spiced "bachelor's stew" that is slow-cooked in tangia pots in public ovens underneath traditional bathhouses. But what he remembers most is being the first foreigner to visit the Berber village of Teferout Nefran in the Atlas Mountains.

TRAVEX

[1] TRAVEX CONVERTIBLE PANTS

★★★★★
Legs zip off to create 10 1/2" shorts. Half-elastic waistband; attached web belt. UPF 50. Breathable, fast-drying nylon. Inseam: S (30", 32"); M-XL (30"-34" EVEN).

REG S-XL B29 122 0636 \$69.95

[2] TRAVEX MOUNTAIN SHIRT

Breathable, moisture-wicking, fast-drying. UPF 50+. Polyester/Cocona polyester/nylon.

REG S-XXL B29 122 0655 \$54.95

TALL M-XXL B29 122 0656 \$59.95

[3] KEEN® AMBLER HIKERS

Water-resistant suede upper. Moisture-wicking fabric lining. Removable EVA footbed. Semi-sticky rubber sole. Sizes 8-12, 13, 14, 15.

B19 122 3111 \$100

[4] ADVENTURER® BACKPACK

500-denier CORDURA® nylon; ballistic nylon bottom. Interior padded sleeve for 15" laptop. Compression straps. Hydration-bladder compatible. 19"H x 12"W x 6.5"D.

N23 122 1734 \$99.95

[5] TRAVEX ESSENTIAL T-SHIRT

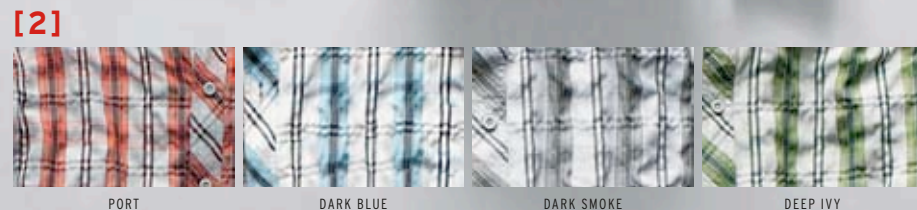
Breathable, moisture-wicking, fast-drying. Cotton/spandex.

REG S-XXL B33 122 8185 \$24.95

TALL M-XXL B33 122 8186 \$27.95

ALL ITEMS IMPORTED, UNLESS STATED OTHERWISE
ALL AVAILABLE SIZES & COLORS AT EDDIEBAUER.COM

♦ CATALOG & EDDIEBAUER.COM ONLY



[MEN'S]



PHOTOS: Courtesy of Richard Wiese

» Walking among Berbers on the Atlantic in Agadir on a journey to visit King Mohammed VI of Morocco

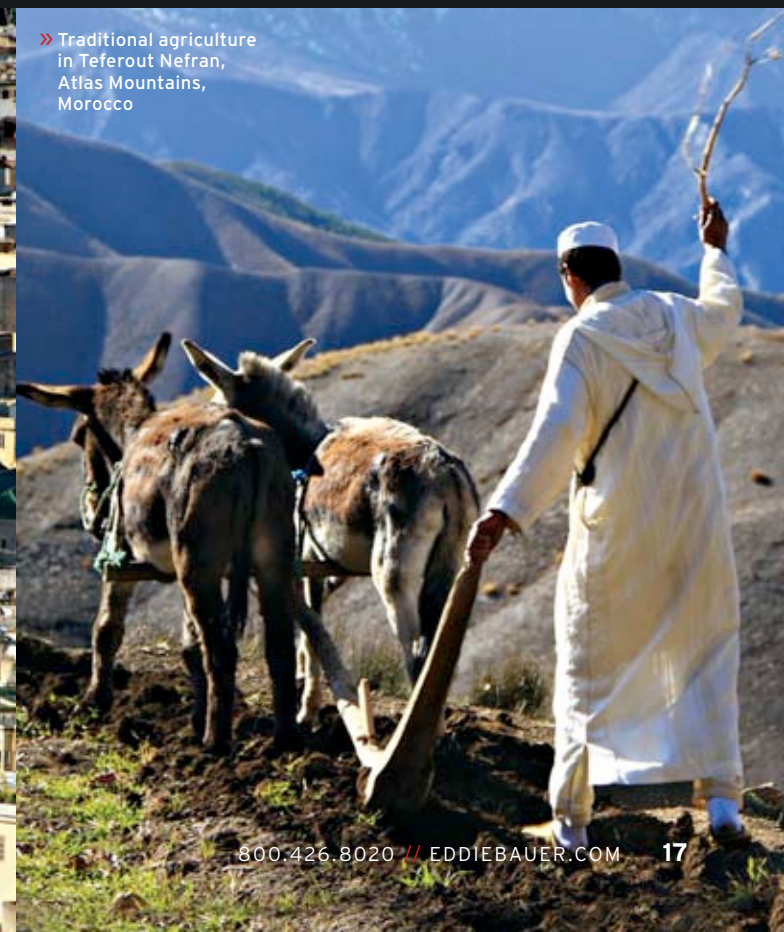


» Biblical-era dye pits in the medieval Moroccan capital of Fez

“WHEN YOU SHARE A MEAL WITH A NOMADIC PEOPLE, HOSPITALITY IS SOMETHING THEY TAKE A LOT OF PRIDE IN,” WIESE REFLECTS ON HIS TIME IN MOROCCO. “AND IN THE DESERT, YOU SHOW HOSPITALITY BECAUSE YOU NEVER KNOW WHEN YOU WOULD BE STUCK IN AN IMPOSSIBLE SITUATION AND NEED TO DEPEND ON KINDNESS.” —Richard Wiese



» Fez, Morocco's medieval capital and a preserved example of high Islamic architecture



» Traditional agriculture in Teferout Nefran, Atlas Mountains, Morocco

ICELANDIC WARMTH

VIKING POETRY, STOUT HORSES, AND SAMPLING PUTREFIED SHARK MEAT IN A VOLCANIC LAND OF EPIC STORYTELLERS

» Iceland is a land of epic sagas. Wiese traveled to the most literate country on earth to explore a Viking heritage that combines elements as diverse as mapmaking, poetry, and horsemanship. On a volcanically active island nation of only 320,000 inhabitants, he attended a communal sheep roundup, tasted putrefied shark meat, and soaked in a stark landscape that still allows public access to private land. But he was

struck by the pride Icelanders take in storytelling. "If you get at the heart of exploration, one of the roles of the explorer was to go someplace, then come back and stand over a fire and say, 'You'll never guess what happened to me,'" Wiese says. "The art of storytelling is something to celebrate, and they do. I enjoy telling good stories, and to me, that's one of the most wonderful aspects of adventure exploration."

» Siglufjörður, a now-quiet fishing village tucked into the fjords of Iceland's north coast



» Stout Icelandic horses in the land of fire, ice, and storied Viking lore



» The Blue Lagoon Geothermal Spa, Keflavik, Iceland

PHOTOGRAPHERS: Richard Wiese and Gavin Heller



[MEN'S]

[1] RIPPAC® RAIN JACKET

Waterproof, wind-resistant, and lightweight. Packs into its own pocket. Adjustable hood and cuffs. 2.5-layer nylon with DWR finish.

REG S-XXXL B88 122 0391 **\$79.95**
TALL M-XXXL B88 122 0392 **\$89.95**◆

[2] DANNER® MOUNTAIN LIGHT™ TERMINAL 4 HIKING BOOTS◆

Leather upper; waterproof GORE-TEX® lining. Vibram® rubber/Armortred sole. Made in USA. Sizes 8-12, 13.

A19 122 2925 **\$340**

[3] ADVENTURER® PACK

Big enough for your essentials, light enough to carry all day. 420-denier nylon; 1,680-denier ballistic nylon bottom. Mesh pockets; padded adjustable shoulder strap. Holds up to a 15.4" laptop. 20"H x 13"W x 8 1/2"D.

C23 122 1487 **\$79.95**

[4] STRAIGHT FIT

AUTHENTIC DENIM JEANS

The perfect, durable pair of jeans for day after day of wear on the road. Handcrafted denim, with the look and feel of jeans already broken in. Sits below waist; straight seat, thigh, and leg. Cotton.

REG 30 (INSEAM 30", 32"); 32, 33, 40 (INSEAM 30"-34" EVEN); REG 34-36, 38 (INSEAM 30"-36" EVEN)
B03 122 5510 **\$59.95**
LONG RISE 34-44 EVEN (INSEAM 34", 36")
B03 122 5511 **\$64.95**

[5] CLASSIC FIT

RANCHER TWILL SHIRT

Beefy cotton twill, built to withstand hard daily use whether working or traveling. Signature fit, comfortable for most men.

REG S-XXXL B34 122 7824 **\$49.95**
TALL M-XXXL B34 122 7825 **\$54.95**◆

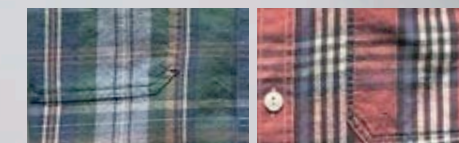
[5]



ANTIQUE BLUE

HORIZON

SMOKY BLUE



DILL

SALMON

NOONDAY SUN IN THE OUTBACK

DISCOVERING 20,000 YEARS OF ABORIGINAL CONNECTION TO THE EARTH IN THE NORTHERN TERRITORY OF AUSTRALIA

» Richard Wiese refers to the Northern Territory as the “Crocodile Dundee” version of Australia’s Outback. In this massive, sparsely populated area, Wiese visited the oldest continuous culture on earth. He tracked the Aboriginal creation myth of the Rainbow Serpent and attended a coming-of-age ceremony in Arnhem Land, where hematite handprints of 20,000 years of ancestors lined the wall of a sacred cave.

TRAVEX

[1] TRAVERSE SHIRT

High-performance stretch fabric functions effectively on the trail, looks good in town. UPF 50+. Wicking, quick-dry polyester.

REG S-XXL B29 122 0648 **\$59.95**
TALL M-XXL B29 122 0649 **\$69.95**

[2] SOLARFOIL HOODIE

Prevents overexposure on the glacier or the beach. UPF 30+. Wicking, quick-dry recycled polyester/integrated Cocona® polyester.

REG S-XXL B29 122 0630 **\$59.95**
TALL M-XXL B29 122 0631 **\$69.95**

[3] TRAVEX® CARGO SHORTS

Water-repellent, moisture-wicking, and quick-drying. UPF 50+. Nylon/polyester. Average inseam: 11".

REG 30, 32, 33, 34, 35, 36-46 EVEN
B29 122 0637 **\$49.95**

[4] ALCHEMIST 30L PACK

Structured support system. Ultralight 210-denier triple ripstop and 420-denier double ripstop nylon with TPU coating. Water-repellent; abrasion-resistant. Patent pending.

C23 122 1792 **\$139**

[5] KEEN® ARCATA SHOES

Suede leather upper; canvas lining. Removable footbed. Rubber sole. Sizes 8-12, 13, 14.

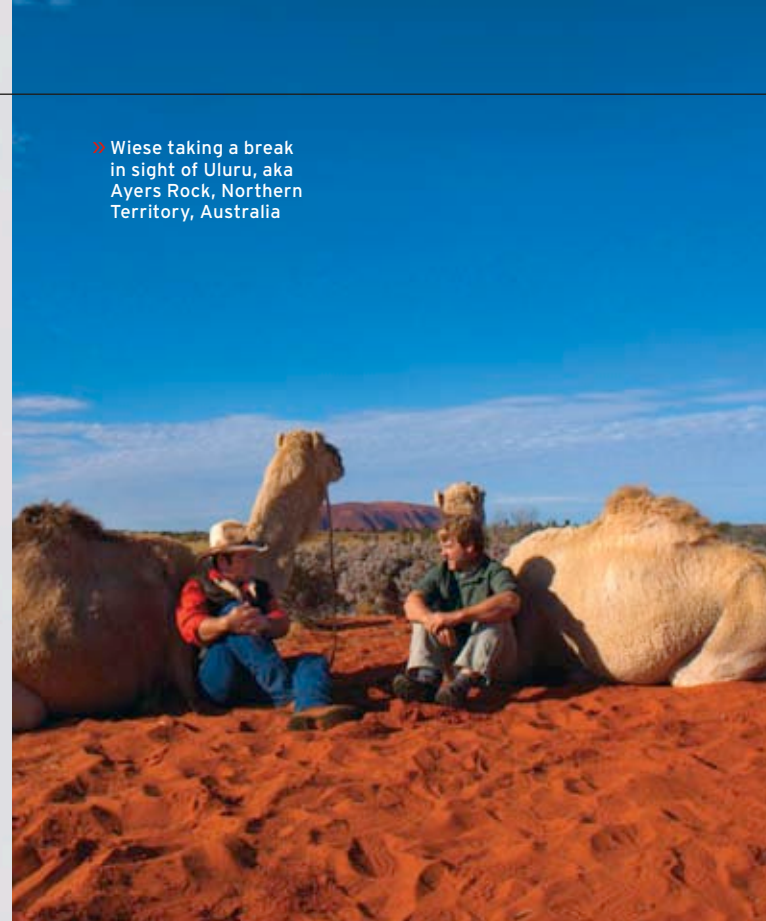
B19 122 3114 **\$80**



[MEN'S]

♦ CATALOG & EDDIEBAUER.COM ONLY • ALL ITEMS IMPORTED, UNLESS STATED OTHERWISE • ALL AVAILABLE SIZES & COLORS AT EDDIEBAUER.COM

» Wiese taking a break in sight of Uluru, aka Ayers Rock, Northern Territory, Australia

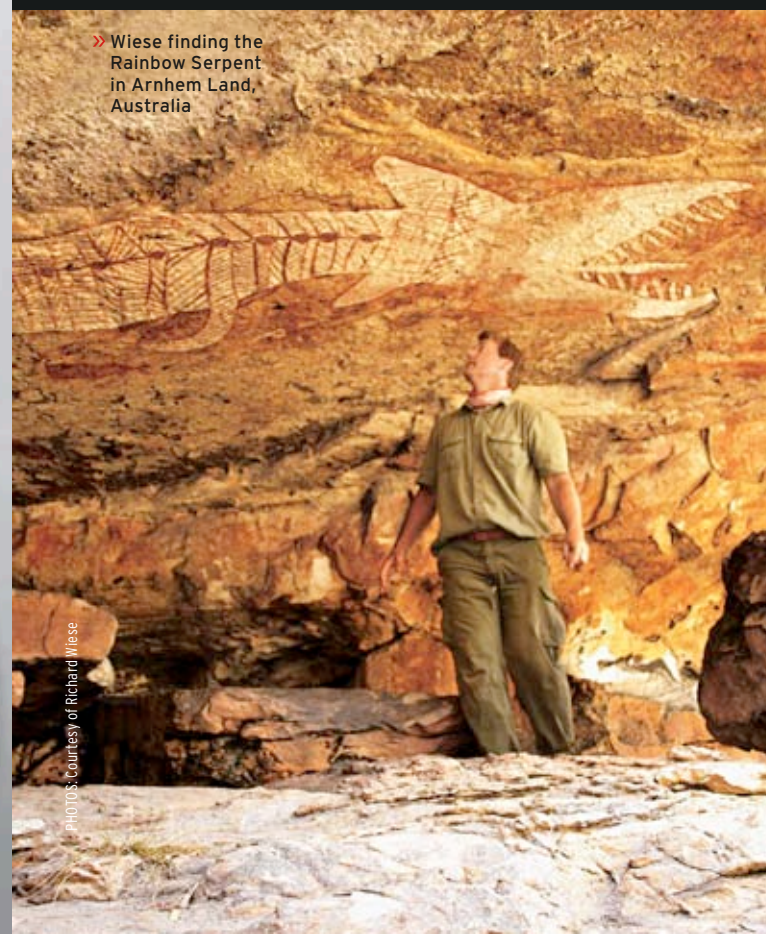


» Very, very cautiously handling a death adder, one of the world's most venomous snakes, in Australia's Outback



“I REMEMBER AN ABORIGINAL MAN SAYING TO ME HE THOUGHT AMERICANS AND EUROPEANS DIDN'T UNDERSTAND THE RHYTHM OF THE EARTH,” WIESE RECOUNTS. “MEANING THAT WE'RE ALWAYS TRYING TO PUT DAMS, BRIDGES, AND THINGS TO ALTER OUR ENVIRONMENT, WHERE THEY'RE STILL LIVING VERY MUCH WITHIN THE RHYTHM OF THE EARTH.” —Richard Wiese

» Wiese finding the Rainbow Serpent in Arnhem Land, Australia



» Living off the land and the sea in the Tiwi Islands, Australia



FELLOW TRAVELER

WEATHER PROTECTION THAT ADAPTS TO ANY SITUATION, CULTURE, OR ITINERARY



MADE FOR TREK & TRAVEL

Eddie Bauer Travex is our exclusive series of gear and apparel made for trekking and traveling. Built by our adventure guide team—with their decades of experience exploring the globe—every item is engineered to perform and ready for adventure.

MOISTURE WICKING

QUICK DRY

UPF

STRETCH



STOWABLE
DRAWSTRING
HOOD
Adapts to weather

WEATHER-
READY
Wind-resistant and
water-repellent



TRAVEX SOFT SHELL JACKET

The ultimate travel and trek jacket. Lightweight and packable, with a stowable drawstring hood and plenty of secure pockets for keeping essentials safe. UPF 30. Moisture-wicking; fast-drying. Polyester/spandex shell is wind-resistant, with a durable, water-repellent finish.

[1] MEN'S				[2] WOMEN'S			
REG S-XXL	B88 122 0393	\$109		REG S-XXL	B89 122 0389	\$99	
PETITE XS-XL	B89 122 0390	\$99	◆	PETITE XS-XL	B89 122 0390	\$99	◆
TALL M-XXL	B88 122 0394	\$129	◆	TALL M-XXL	B89 122 0418	\$119	◆



DARK SMOKE • FOREST
[1] MEN'S

HAZELNUT • BLACK
[2] WOMEN'S



INTERVIEW RICHARD WIESE ADVENTURE EVANGELIST AND HOST OF BORN TO EXPLORE

» WHAT ARE YOUR KEY TRAITS FOR GOOD TRAVEL APPAREL?

Well, obviously it's got to work in the environment you're in. Whether that is keeping you dry, warm, or protected from something else, it's got to have those attributes. But I'm going on the road for 18 days tomorrow and I don't feel like bringing 18 shirts or 18 jackets. I want to be able to wash it out in a stream, or rinse it out and dry it in the hotel shower. With the Travex® pieces, I can clean them in a hotel room. I don't have to send them out.

I also think the Travex designers took a detailed view on how people move. I know that if I lift my leg

in those pants, there's a certain give to the pattern. I travel a lot of hours, and I just can't afford to be in clothing that's binding or that is not comfortable.

» WHEN YOU'RE PACKING FOR A TRIP, IS VERSATILITY SOMETHING YOU LOOK FOR IN YOUR CLOTHING CHOICES?

I'll give you an example, because everyone likes to wear their old comfortable pair of jeans or a T-shirt or a sweatshirt. I find with these soft shell jackets it's like that, but I can roll them and they'll come out without wrinkles in them. Whether I stuff it, roll it, however I pack it, it seems to come out at the other end pretty well.

On an airplane, I can wear this soft shell with a pair of pants and it looks neat and acceptable for business travel, but yet when I'm on location, in a very rugged environment, it's holding up its end of the deal by being comfortable and drying quickly.

» WHY IS PACKABILITY IMPORTANT FOR ADVENTURE TRAVEL?

I like to roll garments and then put them in clear plastic bags. And so with any of these, even the down jackets, the idea that you can take a relatively large amount of stuff in a relatively small bag is good for me. A lot of these charter planes won't allow you to take over a certain weight. Like in Africa with the charters, I can't have over 44 pounds in my bag. I have computers and cameras and all that other stuff, so you don't want big, bulky clothes.

Read the full interview with Richard at blog.eddiebauer.com

INTRODUCING **EDDIE BAUER ADVENTURE TRAVEL GUIDE**

JULIA DIMON

TRAVEL JUNKIE JOURNALISM FROM A PERSPECTIVE OF ACTIVE IMMERSION

Since she first transitioned from backpacker to globe-trotting journalist, “travel junkie” is the moniker that has followed Julia Dimon to some of the world’s most adventurous locations. Her writing career began at age 12 with a monthly column for the *Toronto Star*, although this keen Canadian’s addiction to travel was initially sparked by a trip to Rome. Her perspective on life was altered while she was circling the globe on an around-the-world plane ticket and found a prophetic postcard tacked to the wall of a backpackers’ bar in Byron Bay, Australia.

“Why tell your grandkids you worked 9 to 5, five days a week, for 40 years, and quietly sat in traffic jams while people went to war and suffered disease?” it read in part. “Tell them you refused to live in fear. Tell them you crossed the Amazon, saw the Lost Cities of Gold, and met your soul mate in Casablanca. Travel to the ends of the earth. Go now and live adventures that will make your grandkids proud.”

Since then, Dimon has traveled to over 80 countries and all seven continents as a nationally syndicated Canadian travel journalist and as a host for both

Destination Getaway, an 18-part travel series for MSNBC, and for her *Word Travels* TV show, currently airing on National Geographic Adventure, Travel Channel UK, and Outside TV. She also co-hosts *Outside Today* for Outside TV, a national network dedicated to the active outdoor lifestyle.

Dimon does not shy away from new or strange experiences, and has accumulated a lifetime of memorable cultural moments: dogsledding in Greenland, running with the bulls, training as a gladiator in Rome, camel trekking to the Pyramids, and eating deep-fried guinea pig in Ecuador. Her trips have taken her from the Great Barrier Reef to Machu Picchu, and she has hiked with silverback gorillas in Uganda, traveled to radioactive Chernobyl, gotten faux-tortured in a Latvian prison, and eaten live bugs and slugs all across the globe.

But for Julia, the deeper experience of introducing her readers and viewers to a world beyond the tourist traps and guided tours is what motivates this “travel junkie” journalist to keep circling the globe and writing about the results.

STYLE FOR DAYS

FORM MEETS FUNCTION IN STYLES THAT TRAVEL SEAMLESSLY THROUGH CLIMATES AND TIME ZONES

Few pieces are as indispensable for travel as the perfect active dress. From mornings at the market or days spent discovering new destinations to fancier evenings out enjoying local culinary experiences, packing a dress is almost as important as remembering the passport. The entire Eddie Bauer Travex® collection of dresses—including the popular Lily, Dahlia and Aster styles—is defined by comfortable, low-maintenance fabrics

TRAVEX

MADE FOR TREK & TRAVEL

Eddie Bauer Travex is our exclusive series of gear and apparel made for trekking and traveling. Built by our adventure guide team—with their decades of experience exploring the globe—every item is engineered to perform and ready for adventure.



MOISTURE WICKING



QUICK DRY



UPF

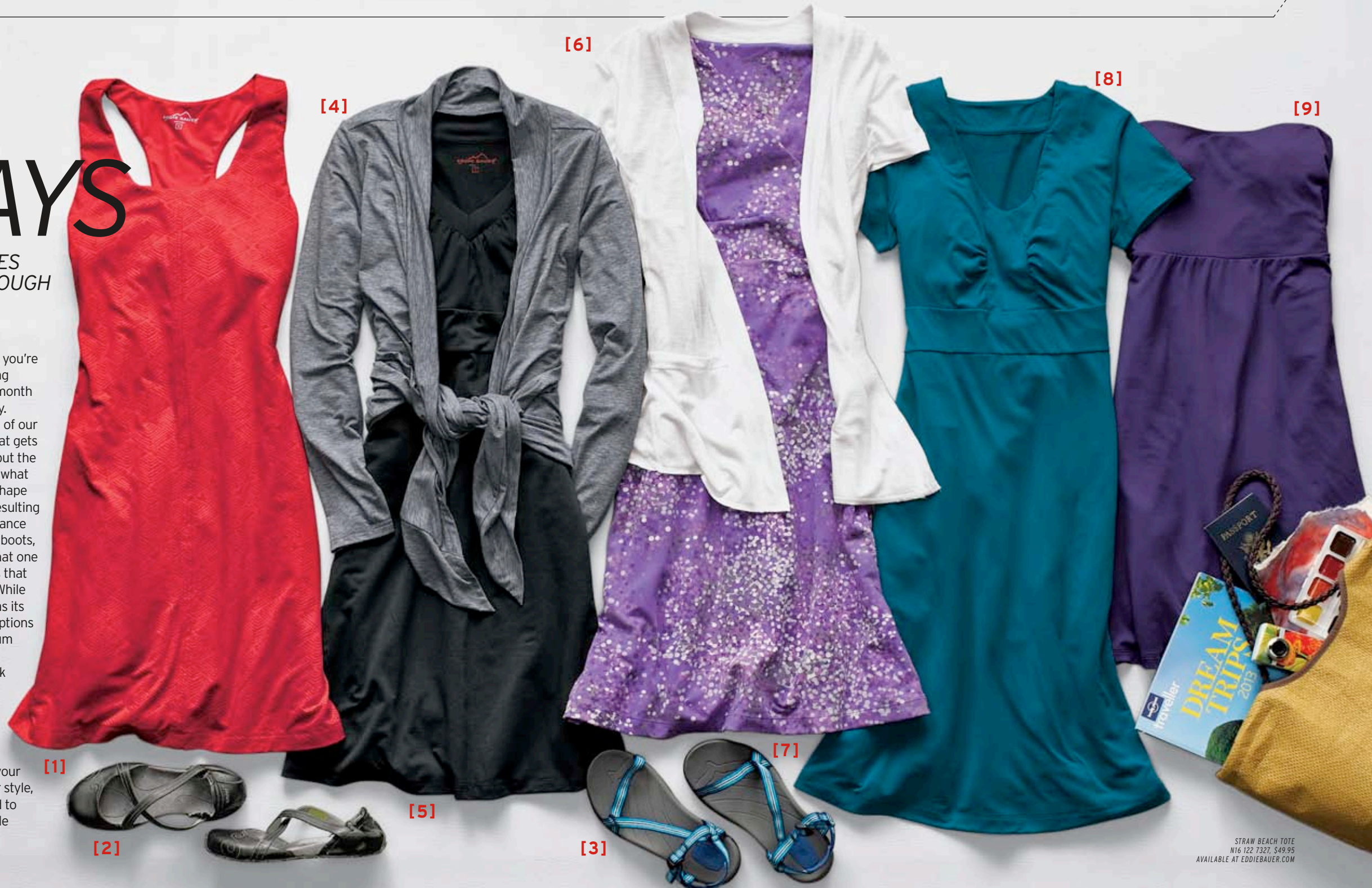


STRETCH

that pack and travel effortlessly, whether you're heading out for a long weekend away or a month of personal discovery.

The touch and feel of our Travex dresses is what gets the most attention, but the integrated stretch is what provides attractive shape and natural drape, resulting in a feminine appearance whether paired with boots, clogs, flip-flops, or that one pair of perfect shoes that fits in the carry-on. While each Travex dress has its own character, the options include a full spectrum of individuality, from the sporty racer-back Dahlia with shelf-bra support, to the more traditional cap-sleeve Aster.

Yet no matter which silhouette matches your destination and your style, each one is designed to provide a comfortable travel experience.



[1] TRAVEX DAHLIA DRESS

At home in any climate. Easy-wear, easy-care stretch fabric resists wrinkles and packs down small. UPF 50+. Moisture-wicking; fast-drying. Racer back. Polyester/spandex.

REG XS-XXL B31 122 0468 **\$79.95**

[2] AHNU® KARMA SLIP-ONS

Leather upper with elasticized straps. Packs small to save space. Microfiber suede-lined footbed. Rubber sole. Sizes 6-10, 11.

B20 122 4859 **\$89.95**

[3] TEVA® ZIRRA SANDALS

Comfortable, active footwear for logging many miles in hot climates. Packs small. Nylon webbing upper. Adjustable straps. Spider Original rubber sole. Sizes 6-10, 11.

B20 122 5730 **\$70**

[4] TRAVEX DAISY WRAP

For dining or sightseeing, our travel wrap provides versatility. Lightweight, wrinkle-resistant performance stretch wicks moisture and packs small. Draped front. Long sleeves. Polyester/Tencel®.

REG XS-XXL B31 122 0469 **\$59.95**

[5] TRAVEX BALANCE DRESS

Polyester/rayon/spandex offers just the right amount of stretch for wrinkle resistance and shape retention. UPF 50+. 3/4-length sleeves. Form-fitting, with A-line skirt. Ideal for home or travel.

REG XS-XXL B31 122 0194 **\$79.95**

[6] TRAVEX WRAP

★★★★★ An easy way to warm up or dress up a tank top when traveling. Wrinkle-resistant recycled polyester/polyester, with princess seams and back elastic band for a flattering fit.

REG XS-XXL B31 122 0162 **\$49.95**

[7] TRAVEX LILY DRESS

★★★★★ Easy to pack, wear, and care for. Faux-wrap neckline for reliable coverage. UPF 50+. Fast-drying, moisture-wicking polyester/rayon/spandex in a smooth silhouette.

REG XS-XXL B31 122 0108 **\$79.95**

PETITE XS-XL B31 122 0464 **\$79.95**
TALL M-XXL B31 122 0465 **\$89.95**

[8-9] TRAVEX ASTER

Low-maintenance, high-performance clothes travel well. UPF 50+. Moisture-wicking polyester/spandex.

[8] ASTER DRESS

Perfect for warm-weather destinations, the stretch fabric of this easy traveler provides a flattering shape. Easy to pack; doesn't take up much space, emerges from suitcase without a wrinkle.

REG XS-XXL B31 122 0467 **\$79.95**

[9] ASTER CONVERTIBLE SKIRT

Travel two-fer saves space: Wear as skirt or unroll waistband to convert into a bandeau dress. Low-maintenance, high-performance poly/spandex fabric. Length: 24" (20 3/4" as dress).

REG XS-XXL B31 122 0466 **\$59.95**

STRAW BEACH TOTE
N16 122 7327, \$49.95
AVAILABLE AT EDDIEBAUER.COM

CLIMATE CONTROL

BREATHABLE, COMFORTABLE FABRICS MAKE THE DIFFERENCE WHEN TRAVELING THE GLOBE WITH ONLY THE CLOTHES IN ONE BAG

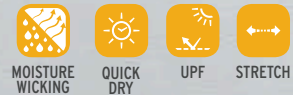
It may seem like a marketing cliché, but the most important performance characteristic for comfortable, travel-rated fabrics still boils down to versatility. That need for great range is the reason we selected a single nylon/spandex fabric fusion for our entire line of adaptable women's Travex® pants. Classified as a two-way, lightweight stretch woven, the 150-gram weight synthetic fabric provides a comfortable, breathable, quick-drying, and weather-resistant alternative to packing along a suitcase full of traditional casual fabrics when traveling between time zones.

We could just tell you it's eternally comfortable, but the microfiber technology is driven by a perfectly honed nylon/spandex blend that provides two-way stretch for greater active mobility, as well as an attractive shape and long-term resiliency for a presentable appearance in any setting or situation. The quick-dry

nature of the synthetic fabric also allows it to dry quickly when soaked in a stream or washed in the hotel sink, while a UPF rating of 50+ protects skin from harsh sun in hot, humid climates. Yet no matter what style is selected for weekend trips or weeklong treks, the low-maintenance, easy-care feel of the fabrics is what makes all the pants, shorts, and skirts in this collection such ideal traveling companions to pack when heading out of town.

TRAVEX[®] MADE FOR TREK & TRAVEL

Eddie Bauer Travex is our exclusive series of gear and apparel made for trekking and traveling. Built by our adventure guide team—with their decades of experience exploring the globe—every item is engineered to perform and ready for adventure.



[WOMEN'S]

[1] CONVERTIBLE PANTS

Legs unzip to become 9" shorts when temps climb. Durable water-repellent finish sheds light rain. Quick-drying nylon/spandex. UPF 50.

REG 2-20	A31 122 0484	\$69.95
PETITE 2-18	A31 122 0485	\$69.95
TALL 6-20	A31 122 0486	\$79.95

[2] FREEZER WATER BOTTLE

BPA-free. Removable freezer core. 32 oz.

C22 122 3464	\$11.99
[3] STANLEY® NINETEEN13® ONE-HAND VACUUM MUG	
Drinks stay hot/cold up to 6 hours.	
Stainless steel. 16 oz.	
N22 122 3521	\$30

[4] SKORT

Designed for fast-paced travel. Low-pro built-in shorts underneath add active function. Quick-drying nylon/spandex. UPF 50.

REG 2-20	B31 122 0487	\$59.95
PETITE 2-18	B31 122 0488	\$59.95
TALL 6-20	B31 122 0489	\$69.95

[5] SHORTS

Comfort for long days, long hikes, and long stints on the road. Secure zip pockets safely stow valuables. Quick-drying nylon/spandex. UPF 50.

REG 2-20	B31 122 0544	\$49.95
PETITE 2-18	B31 122 0545	\$49.95
TALL 6-20	B31 122 0546	\$54.95

[6] CAPRIS

Moisture-wicking. UPF 50+. Quick-drying nylon/spandex with slight stretch for active comfort when hiking, strolling, or sauntering.

REG 2-20	B31 122 0481	\$59.95
PETITE 2-18	B31 122 0482	\$59.95
TALL 6-20	B31 122 0483	\$69.95

[7] PANTS

Moisture-wicking. UPF 50+. Wear full length or roll up with attached button tabs. Quick-drying nylon/spandex.

REG 2-20	B31 122 0478	\$69.95
PETITE 2-18	B31 122 0479	\$69.95
TALL 6-20	B31 122 0480	\$79.95

[8] BERMUDA SHORTS

Ultra-lightweight for noontime comfort in hot or humid climates. Zip back pockets. Quick-drying nylon/spandex. UPF 50.

REG 2-20	B31 122 0563	\$54.95
PETITE 2-18	B31 122 0564	\$54.95
TALL 6-20	B31 122 0565	\$59.95

[9] SKIRT

Active freedom for trek or trail. Lightweight. UPF 50+. Quick-drying nylon/spandex.

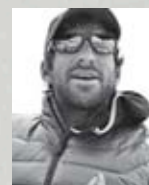
REG 2-20	B31 122 0547	\$49.95
PETITE 2-18	B31 122 0548	\$49.95
TALL 6-20	B31 122 0549	\$54.95



“WHEN I'M PACKING FOR A TRIP, I TRY TO KEEP MY CLOTHES LIGHT, VERSATILE AND PRACTICAL.”

—Julia Dimon

ANTARCTICA FOLLOWING SHACKLETON'S FOOTSTEPS



FINDING TRUE REMOTENESS, PENGUINS, AND A WEATHERED ISLAND STILL RESONATING WITH A CENTURY-OLD STORY OF SURVIVAL ON THE SOUTH GEORGIA TRAVERSE

BY EDDIE BAUER FIRST ASCENT GUIDE DAVE HAHN

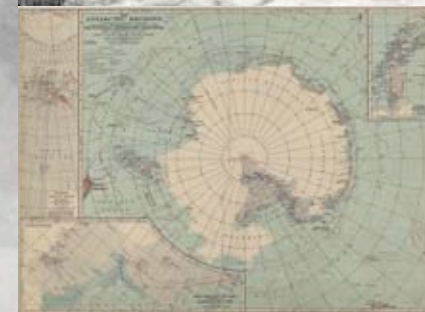
I've heard plenty of knowledgeable and smart people state categorically that Shackleton's *Endurance* saga is the greatest survival story of all time.

Personally, I don't buy that. For one, I don't rate such things. And if I did, any instance where I myself had narrowly escaped death, dishonor, and supreme discomfort would have to rank higher than Shack's hundred-year-old epic. History is written by the most recent victor.

But like any of us that have gone to extremes to see the weird corners of the globe, I get excited about the history of those that have gone before. If you hang out in Antarctica, how can you not get amped for a 1914

expedition that set out to cross the continent on foot, instead got trapped for years in sea ice, watched their ship crushed and sunk by that ice, took to the lifeboats, fetched up on a ridiculously harsh and remote island, set off again with a select handful for 17 days in a tiny open boat on the world's roughest ocean, fetched up on yet another ridiculously harsh but slightly less remote island, and then somehow got three men across unexplored mountains and glaciers to effect a rescue of the 22 men back at the first ridiculously harsh island.

I've gone to South Georgia seven times now with the goal of repeating Ernest Shackleton's crossing of the island and I've succeeded five times in »



PHOTOS: courtesy of The Royal Geographical Society

TRIP OF A LIFETIME

WE ASKED OUR MOST TRAVELED MOUNTAIN GUIDES TO RECOUNT THEIR MOST EPIC STORY OF ADVENTURE FROM THE MOST REMOTE PLACES ON EARTH. THESE TALES ARE THE RESULT.

30
ANTARCTICA
CROSSING SOUTH
GEORGIA ISLAND

34
MONGOLIA
NOMADIC
TREKKING

36
KENYA
IN THE HEART
OF AFRICA

getting across. It is a pretty complicated trip, in terms of logistics, but not nearly so complicated as repeating the entire *Endurance* adventure would be (what with sinking the ship and all). I'm always asked how a modern repetition of the Shackleton Crossing compares to the original event in 1916. It doesn't. It can't. When I guide South Georgia, which I do with every modern convenience and advantage I can possibly conjure up, it simply can't come close to the desperate situation Shackleton, Frank Worsley, and Tom Crean were endeavoring to escape from.

That inequity doesn't make it easy for me or any less meaningful for my climbing partners. I've ended up in some of the most powerful and dramatic storms of my life in attempting the crossing, such as trying to navigate mountain passes and big glacier crevasses when I could barely see the GPS in my hand through 70-mile-per-hour snow and rain. Following in the footsteps of the Boss obviously doesn't make me the Boss, but it gives me a glimpse of the man that I can't get from books or pictures or film. And I need that.

Still, I don't know any Shackleton fanatic who has gone to South Georgia for that link with history and not come away with an equally significant fascination for the place itself. Hundreds of thousands of penguins, albatrosses, whales, elephant seals, jagged mountains, glaciers, violent storms, and the South Atlantic conspire to make the place unique and unforgettable. When I arrive on her shores, I half expect to see pterodactyls flying down to greet me. If I'm lucky enough to get there again, I'll have my camera ready.

Thank you to the Royal Geographical Society of London—and to their knowledgeable archivist Jamie Owen—for access to the historical images from Shackleton's Imperial Trans-Antarctic Expedition on the *Endurance*.

IT GIVES ME A GLIMPSE OF THE MAN THAT I CAN'T GET FROM PICTURES OR FILM. AND I NEED THAT.”



» Making camp, 21st century style, on the South Georgia Traverse



» Dave Hahn re-coiling on, but not recoiling from, a historic traverse



» The locals on South Georgia Island



» Traversing cautiously on an island with some of the world's fiercest weather



» Horizon views, bitter cold, and deep snow with a few modern conveniences

PHOTOGRAPHERS: Jake Norton, Dave Hahn, and Deirdre Galbraith



GEAR OF THE YEAR 2011

NATIONAL GEOGRAPHIC ADVENTURE

[MEN'S] CROSSING ANTARCTIC WATERS

[1] GUIDE GLOVES

A First Ascent guide team favorite. Water-repellent and abrasion-resistant. Pre-curved finger construction. Pittards® leather palm/fingers. 5-oz. PrimaLoft® insulation. Merino wool jersey lining. Polyester shell. Unisex. XS-XL. A41 122 0060 **\$119**

[2] HANGFIRE® JACKET

Moves easily between activities and seasons as layer or outerwear. Superior breathability. Torso fleece has soft-brushed interior and anti-pilling exterior. Two-way stretch panels. Polyester/spandex.

REG S-XXL B88 122 0556 **\$99**
TALL M-XXL B88 122 0557 **\$119**

[3] LEGEND WASH T-SHIRT

High-quality combed cotton with exclusive Legend Wash finish for broken-in feel.

REG S-XXXL B33 122 6286 **\$19.95**
TALL M-XXXL B33 122 6287 **\$22.95**

[4] RAY-BAN® AVIATORS

Iconic look in a lightweight metal frame. Polarized lenses.

C22 122 2677 **\$139**

[5] LUMINOX® FIELD WATCH

42mm stainless steel case. Water-repellent to 200m. Night illumination feature. Swiss-made movement. Leather strap.

N22 122 2809 **\$495**

[6] EMPEROR PARKA

Built in partnership with the Antarctic Logistics and Expeditions (ALE) team and winner of *National Geographic Adventure's* 2011 Gear of the Year Award, this parka has it all. Outstanding features include a burly, extremely durable 7.96-oz., 500-denier CORDURA® nylon shell with StormRepel® DWR finish and nearly one pound of 700 fill Premium European Goose Down. It also has pockets to hold everything from energy bars to equipment manuals to heavy tools, a down-filled hood that locks in heat, and a longer, mid-thigh length for better coverage.

REG S-XXL A88 122 0207 **\$399**
TALL M-XXL A88 122 0208 **\$419**

[7] OFF-SEASON PANTS

Lightweight, packable, and durable cotton canvas in a simple, clean style. Ideal for off-season pursuits, from fishing to hiking to road-tripping. Articulated knees.

REG 30-34 EVEN (30"), 30-38 EVEN (32"),
32-38 EVEN (34"), 33 (30", 32")
B29 122 0562 **\$69.95**

[8] FIRST ASCENT MERINO BEANIE

Tested at all altitudes throughout the world by our First Ascent guide team. 100% merino wool. One size.

B41 122 0024 **\$29.95**

MONGOLIA

THE NOMADIC TRAVERSE

MIXING THE MARE'S MILK OF MONGOLIA IN THE ANCIENT LAND OF GENGHIS KHAN

BY EDDIE BAUER FIRST ASCENT GUIDE DAVID MORTON



I opened the ornately painted door with a bit of trepidation. Our guide had been telling us all morning that when we encountered a traditional nomadic homestead, it would be compulsory to stop and greet the family. We were in the northwest of Mongolia inhabited by ethnic Muslim Kazakhs. Was this a trick of some sort? In my travels, I'm accustomed to "compulsory" stops that usually entail some version of a contrived cultural tourist show or a thinly disguised cultural kitsch-shopping trip.

This was different. It was a real tradition, forcing interactions I've rarely experienced in much of the world. The beautiful and welcoming "presence" of people is unparalleled. To add "icing on the cultural cake," we were also obliged to take a turn mixing the fermenting mare's milk (called airag) that sits near the front door as you enter and then seat ourselves near the

head of the household for a taste. What a beginning to the day.

Although his heirs didn't quite accomplish what he dreamt of, Genghis Khan's legacy and legend has absolutely fascinated me. After being in Moscow for the first time and understanding the breadth of his reign, I've been captivated. The Mongol Empire once encompassed 16% of the earth's land and ruled over 100 million people. His shocking conquest is unmatched by any relative measure, either before or after. Mongolia is loosely now what remains of that expansive and dominant 13th-century empire. And, like most countries of the world, the result is a cultural hodgepodge marked by borders created through intervening years of political upheaval and power struggles. For us, this unique cultural landscape and a chance to satisfy my Genghis Khan obsession was hard to resist. Plus, Mongolia has mountains, which is why we were here in the yurt, mixing mare's milk in the ancestral land of Genghis Khan.



Read more about David Morton's trekking through Mongolia on the Live Your Adventure blog at blog.eddiebauer.com



PHOTOGRAPHERS: David Morton and Robert Harding World Imagery



TREKKING WITH THE NOMADS [MEN'S]

[1] BC MICROTHERM™ JACKET 2.0

2012 *Backpacker* magazine's "Editor's Choice" Award. Maximum protection, minimum weight. See Best in Class p48 for full details.

[2] TRAVERSE SHIRT

See p20.

[3] ALCHEMIST 30L PACK

For short or long mountain treks, the TPU-coated fabric and comfortable, supportive structure of our 30L pack make it the choice for logging many miles in the high country. See p20 for full description.

[4] LA SPORTIVA® XPLORER MID-GTX HIKING SHOES

See p7.

[5] FIRST ASCENT LIGHTWEIGHT HIKING SOCKS

Cushioned underfoot. Breathable; moisture-wicking. Merino wool/nylon/spandex. N41 122 0017 \$18.95

[6] FIRST ASCENT FLEXBAND TRUCKER HAT

The hat to have on hand when trekking through foreign lands or just traveling to the mountains for a long weekend. See p7 for full description.

[7] FIRST ASCENT ACCELERANT JACKET

Ideal for stop-and-go activities, this multi-functional hybrid can be worn as an outer insulator, layered under a shell, or packed as back-up. Breathable, pill-resistant fleece stretch side panels vent heat and wick moisture. Fitted hood; inner cuffs with thumbhole. 40-gram PrimaLoft ONE polyester insulation keeps you warm even when wet. Water-repellent, wind-resistant nylon shell with StormRepel® DWR finish. Polyester/spandex.

REG S-XXL B88 122 0445 \$179
TALL M-XXL B88 122 0446 \$199

[8] MAXIMUS 80 DUFFEL

Five handles, plus padded shoulder straps, for carrying options. Grind Guard webbing protects critical points from wear. 1,000-denier tarpaulin with 210-denier ripstop nylon. N23 122 1854 \$129

[9] FIVE-POCKET FIELD PANTS

Straight fit sits below waist; straight seat, thigh, and leg. Bedford dobby cotton.

REG 30 (INSEAM 30", 32");
32-36, 38-42 EVEN (INSEAM 30"-34" EVEN)
B03 122 6200 \$59.95
LONG RISE 34-44 EVEN (INSEAM 34", 36")
B03 122 6201 \$64.95

KENYA

IN THE SHADOW OF THE WATER TOWER



TASTING THE HEART OF KENYA, ONE SAMBURU RITUAL AT A TIME, ON A CLEAN WATER MISSION TO CLIMB AFRICA'S SECOND HIGHEST PEAK

BY EDDIE BAUER FIRST ASCENT GUIDE JAKE NORTON

"If you reject the food, ignore the customs, fear the religion, and avoid the people, you might better stay at home." —James A. Michener

Blood dripped from my nose and chin, a metallic, gamey taste slithering down my throat. The goat's throat, in contrast, was filleted open like a leather purse, specks of fine Kenyan dust settling on the crimson pool held open by Samburu warriors. "You like it?" queried Bernard, a Samburu from nearby Kiltanany village. "Please, have some more." "I'm good, thanks," I countered, my weak smile barely

I HAVE ONLY ONE RULE, ONE GUIDING PRINCIPLE, TO LEAD ME: EMBRACE IT. DIVE INTO THE PLACE FULL BORE.

concealing the retches coming from down below.

I've got to admit that I don't often drink goat's blood. In fact, this was a first for me (and quite possibly a last). But I'm glad I did it, because it was an integral part of the warp and weft of our travels in Kenya, a small bit of fabric that brings meaning and interpretation to the whole.

When I travel, I really have only one rule, one guiding principle, to lead me: embrace it. Dive into the place full bore. Engage with the people, even when it's uncomfortable; get lost in the city, wandering on foot, even when it's foreign. Speak the language, even when it doesn't roll off the tongue. Venture into the hills, even if there is no path; learn about people's customs, world views, beliefs, loves, hates, and fears. Ask questions, and listen to the answers. Don't be afraid to help when you can, and to ask for it when you need it. And yes, even drink a little goat's blood from time to time.

We had come to Kenya for a simple reason, on the surface: to climb Mount Kenya, Africa's second-highest peak, and document the water issues faced by all those who live downstream from its rapidly receding glaciers. We never made the top, turned around by violent thunderstorms and all-too-close lightning »

PHOTOGRAPHER Jake Norton

« Visiting Samburu tribesmen, and experiencing Africa's beating heart, on the approach to Mt. Kenya

just fifty feet shy of the summit. But the trip was always about much more than climbing a peak; it was an experience, an opportunity to learn and to share, to engage and explore and laugh and cry. In the desperate shanties of Mathare, one of Nairobi's toughest slums, we walked alleyways choked with sewage and trash while laughing with children who were hula-hooping an old bike tire. We listened to Edra Mbatha and Soiya Gecaga's stories of tragedy and of hope, of orphaned, HIV-positive children getting healthy, learning to read and write, and starting down a new path. In Samburu, we learned of the gruesome poaching of elephants, biblical flooding and subsequent drought in the Ewaso Ngiro River, and had our fortunes told with a fifty-year-old pair of sandals by an elderly Samburu warrior. On Mount Kenya, we wandered labyrinthine ramparts, seeing firsthand the disappearing glaciers and the myriad downstream challenges they present.

And that night on the savannah, under the vast African sky, we danced around a campfire long after dark, speaking of our worlds so far apart, so absolutely different, and yet exactly the same.

In the end, adventure travel isn't about drinking goat's blood, although that can certainly be a part of it. Adventure travel is about making the unknown...known. It's about curiosity, about seeking out those things that are foreign, different—even scary—to us, and doing our best to understand. And, as a result, adventure travel is, at its most fundamental, profound, and important level, transformative. As T. S. Eliot wrote in "Little Gidding":

We shall not cease from exploration
And the end of all our exploring
Will be to arrive where we started
And know the place for the first time.

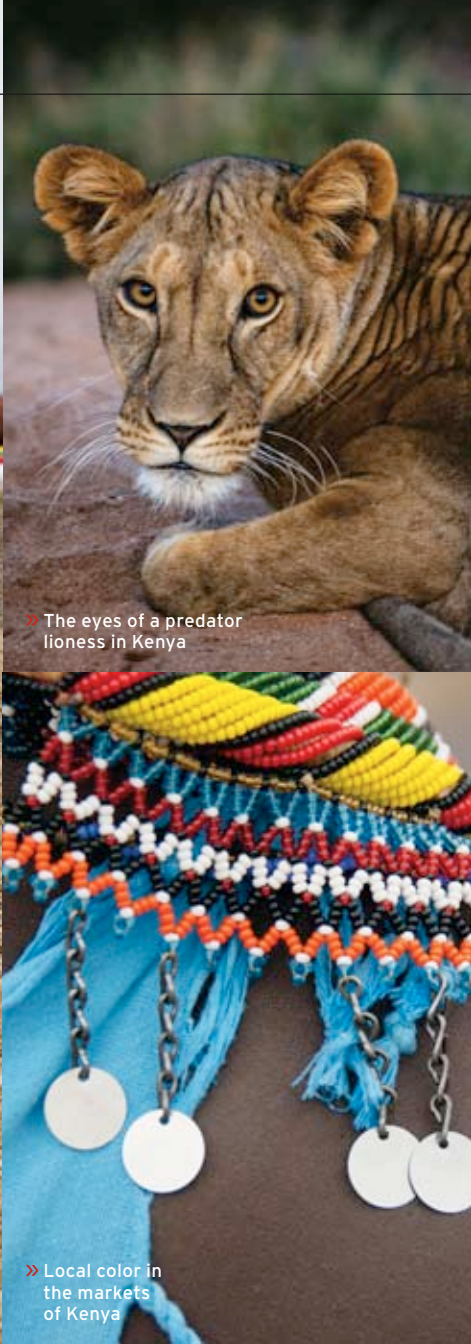
Jake and his teammate, filmmaker Pete McBride, are producing a film on the story of their Kenya expedition. *The Water Tower* will screen at festivals throughout 2013.

ADVENTURE
TRAVEL
IS ABOUT
MAKING THE
UNKNOWN...
KNOWN. ”

» Gathering a precious resource by the Samburu in Kenya



» The eyes of a predator lioness in Kenya



» Local color in the markets of Kenya

» Perspective above the clouds of Africa, from Batian, Mt. Kenya



PHOTOGRAPHER: Jake Norton. Book reprinted from *The Safari Companion* copyright 1993 by Richard Estes with the permission of Chelsea Green Publishing (www.chelseagreen.com).



TREKKING THROUGH AFRICA

[MEN'S]

[1] SANDSTONE SOFT SHELL

A soft shell that keeps the microclimate comfortable when you're traveling in unpredictable environments or tackling high-output activities, this highly adaptable piece is an efficient one to pack. Rolls and packs small when space is at a premium. Lightweight, breathable, 4-way stretch shell. Safety reflective details. Dropped back hem for more coverage. StormRepel® DWR finish sheds weather. Nylon/spandex/polyester.

REG S-XXL B88 122 0390 **\$89.95**
TALL M-XXL B88 122 0405 **\$99.95**

[2] TRAVEX™ MULTI-CARRY SYSTEM

Functions as a duffel, briefcase, or backpack via padded straps. Fits most airline carry-on bins. Secure interior storage. Burly CORDURA® nylon. 21"H x 12"W x 9"D.

C23 122 1791 **\$119**

[3] TRAVEX® CONVERTIBLE PANTS

Made with a quick-dry, UPF 50+ fabric that performs under pressure. Zips to 10" shorts. See p16 for full description.

[4] SALOMON® XR MISSION HIKING SHOES

See p50 for full description.

[5] FIRST ASCENT® BASEBALL CAP

A guide favorite for big peaks or long treks, this classic cap shades the sun and provides a quick morning solution for getting out the door or out of the tent without showering. Pre-curved visor; adjustable back strap. Enzyme wash gives it a well-worn look. Cotton.

B41 122 0021 **\$19.95**

[6] FIRST ASCENT PEAK BAGGER POLO

The perfect short-sleeve shirt for active summer missions. Wicking performance helps it keep its cool in high-activity or high-stress situations. Casual style looks outstanding when relaxing back in town. Zip pocket keeps travel essentials safely stowed. Active fit. Seamless, moisture-wicking cotton/polyester.

REG S-XXL B29 122 0644 **\$44.95**
TALL M-XXL B29 122 0645 **\$49.95**

[7] LUMINOX® FIELD WATCH p33

LYNSEY DYER

TROPICAL PARADISE

SURF ICONIC BREAKS, VISIT UNCROWDED BEACHES, AND SIP KAVA TEA EN ROUTE TO THE SOUTHERN HEMISPHERE

GUIDE'S DAY OFF

THE INSIDE LINE

LOCATION FIJI



With a long-standing reputation as a South Pacific tropical paradise, Fiji offers activity junkies adventures ranging from diving to surf, exploring native culture to experiencing the effects of the famous kava tea. While there's been some recent political unrest, it's generally a safe way to soak up island sunshine on your way to or from the Southern Hemisphere ski season. The skinny on Fiji:

[1] REEF SURFING

Visiting during the offseason means Tavarua's boat-accessed Cloudbreak is less crowded, but just as much of a fast, left hand, reef-break ride. Bring some confidence and awareness of surfing protocol.

[2] SUNBATHING

The Southern Yasawas provide pristine, clothing-optional beaches so quiet you might not see another soul. Sunset hikes up rugged volcanic peaks provide magnificent views.

[3] VOLUNTOURISM

Local villages are open to sharing their culture with visitors, especially

if you link up with an organization such as the Yasawa Trust Foundation, which will instruct you on customs and protocol.

[4] BARGAIN Haggling over the final price of gifts or souvenirs is expected and is a chance to get to know someone, make a friend, and share some kava tea, if you intend to buy.

[5] KAVA With a history of reducing stress and anxiety, as well as promoting an overall sense of well-being, kava tea is a part of the culture and the ceremony of Fiji.




FREE-SPIRITED TRAVEL

CASUAL PIECES FOR TRAVELING
THROUGH TIME ZONES WITH THE
FLEXIBILITY TO EXPLORE

CASUAL PIECES FOR TRAVELING
THROUGH TIME ZONES WITH THE
FLEXIBILITY TO EXPLORE

[1] TRAVEX® ASTER TANK

Lightweight, packable, and perfectly comfortable, this tank top wicks moisture, dries quickly when wet, and helps protect your skin from the sun. UPF 50+. Polyester/spandex.

REG XS-XXL	B31 122 0451	\$34.95
PETITE XS-XL	B31 122 0452	\$34.95
TALL M-XXL	B31 122 0453	\$39.95 

[2] PLACED PRINT HOODIE


Soft and comfortable with eye-catching floral pattern work. Sleeves roll and fasten with tabs. Classic fit. French terry cotton.

REG XS-XXL	B09 122 6691	\$59.95
PETITE XS-XL	B09 122 6692	\$59.95
TALL M-XXL	B09 122 6693	\$64.95

[3] TRAVEX SKORT See p28 for full description.

[4] DAISY MESSENGER BAG

Fleece-lined sleeve and pocket protect your tablet and cell phone. Double clips and Velcro® tabs provide two options for closing the bag. Adjustable shoulder strap with removable padded sleeve. Interior mesh organizer pockets. 420-denier nylon.

[5] SANUK® YOGA SPREE FLIP FLOPS 

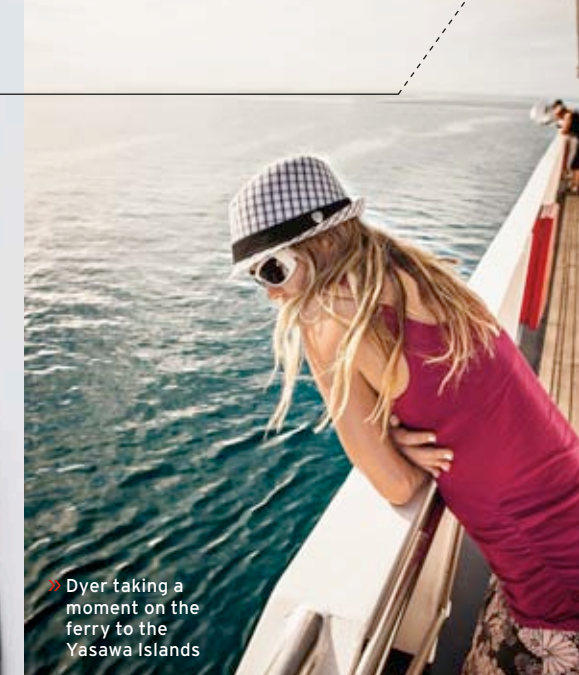
Woven strap with webbing liner. Ultrasoft, sealed-edge footbed made from real yoga mats; ribbed rubber sole. Sizes 6-11 (whole sizes only).

B20 122 5580	\$32
--------------	------

[6] PACKABLE STRAW HAT

N16 122 7344 **\$39.95**

◆ CATALOG & EDDIEBAUER.COM ONLY • ALL ITEMS IMPORTED, UNLESS STATED OTHERWISE • ALL AVAILABLE SIZES & COLORS AT EDDIEBAUER.COM



» Dyer taking a moment on the ferry to the Yasawa Islands



» Traditional Fijian architecture on the hike to Navola Falls



» Somewhere near Korolevu, at the Beachouse Hostel on Fiji's Coral Coast

PHOTOGRAPHERS: Jace Rivers and Monica Gussow

LEL TONE

BAJA SUP SESSION

POINT THE CAMPER SOUTH TO SET TIRED FEET FREE, PADDLE PRISTINE WATERS, AND PLAY A LITTLE BEACH-GAMMON



» Lel Tone showing strength and stamina during an extended SUP session

PHOTOGRAPHER: Ben North

THE INSIDE LINE

LOCATION BAJA, CALIFORNIA



For anyone who spends their days making a living as a guide in the mountains, the work season means feet crammed in boots: your toenails are blue and almost falling off. The off-season means it's time to give those feet a break and get the toes in the sand,

while soaking a little sun into that Vitamin-D-deprived, Alaskan-heli-guide skin. For me, spring means slipping south of the border for a little sun, surf, beach yoga, and maybe a game of beach-gammon while trading in layers of Gore-Tex®, down, and fleece for a sunhat and a lukewarm Tecate. Every season, my husband Tom Wayes and I load up the camper with propane, block ice, sunscreen, Hornitos, limes, tortillas, and surf wax so we can get lost and then found on a dirt road and remote beach in Southern Baja. This is where to start.

[1] MERCADO ORGANICO In San Jose, stock up at the farmers market in the arroyo near the Polo Club every Saturday from November through May 27. Local artists show their wares, plus fresh veggies and yummy food.

[2] LOS MICHOCANOS Boasting "las mejores carnitas aqui," their slogan is no joke and you order meat by the kilo.

[3] FLORA'S FARM For one splurge, head here for dinner to stroll

through the gardens, eat a wood-fired pizza, and maybe take in a movie sitting on lawn chairs under the stars. You might forget momentarily that you are in another country and not in Napa.

[4] FRANK ARNOLD GALLERY In San Jose, swing by for a visit and sip of tequila with Frank and Carmen. Their gallery, a few blocks from the historic town square, is a work of art in itself. View his beautiful oil paintings and chat with him about "The Story of 8."



[WOMEN'S]

[1] TRAVEX® LILY DRESS
See p27 for full description.

[2] SOLARFOIL HOODIE
The guide's choice to prevent overexposure on the beach or glacier. Integrated Cocona® technology wicks moisture and dries fabric faster. UPF 30+. Recycled polyester/Cocona polyester.
REG XS-XXL B31 122 0450 **\$59.95**

[3] TRAVEX CAPRIS
See p29 for full description.

[4] SUNCLOUD® VOUCHER SUNGLASSES
Polarized polycarbonate lenses in a Grilamid TR® frame. 100% UVA/UVB protection. Wrap style.
N22 122 3286 **\$49.99**

[5] MIIR WATER BOTTLE
For each bottle purchased, Miir provides a person in need with a year's worth of clean water. BPA-free; stainless steel. Black wedge lid. 27 oz.
C22 122 3467 **\$19.95**

[6-7] NEXT BY ATHENA® SWIMWEAR ♦
NEXTFlex® fabric with extra stretch creates swimwear that doubles as activewear. Breathable and moisture-wicking. SPF 50. Nylon/spandex with polyester lining.

[6] 30-MINUTE RACERBACK SPORT BRA
Styled for support, with no falling straps. Bra cup sizing ensures an excellent fit. Removable soft cups.
32 B/C-38 B/C B12 122 3632 **\$55**

[7] JUMPSTART SWIM SHORTS
Designed for easy on/off coverage.
REG XS-L B12 122 3627 **\$55**

[8] SANUK® YOGA SLING SANDALS ♦
The ultimate in laid-back comfort. Unique, two-way stretch knit upper with sling comfort construction. Ultrasoft, sealed-edge footbed made from real yoga mats; ribbed rubber sole. Vegan/vegetarian. Sizes 6-11 (whole sizes only). Black.
B20 122 5579 **\$36**

REGGIE CRIST

SURF BREAK

TRANSITION TO THE GARDEN ISLAND
TO SCORE SOME SURF AND SOAK UP
SOME R&R WITH THE FAMILY

THE INSIDE LINE

LOCATION KAUAI, HAWAII



The north shore of Kauai is a playland—a rugged coastline where the road ends and the ocean and the mountains collide. Dramatic peaks with razorback ridges jet up straight from the water's edge. I make a point to visit every spring—leaving ski boots at home and bringing my quiver of surfboards along with my family to enjoy a little “tropical time.” I always look forward to meeting up with my local buddies and searching for surf by boat along the Napali Coast when the north swell drops and trade winds subside. But there is never a dull moment whether SUPing, hiking, snorkeling, or chilling on the beach.

[1] RUN THE KALALAU COAST TRAIL It's only a 4-mile round trip to Hanakapiai Beach, but the trail is rugged and slippery. The views are worth the extra effort.

[2] STAND UP IN HANAIEI BAY From the Summer Break channel to Middles and back again, when the swell subsides, for a great workout.

[3] DINNER AT THE DOLPHIN Fresh fish

and the best sushi on the north shore. Check out the beach boutique I Love Hanalei for local gifts.

[4] HELI ON THE COAST See the Napali Coast by boat or heli and you won't believe your eyes as dramatic peaks drop into the Pacific.

[5] PAT'S TACO TRUCK Tasty fish tacos at a price that can't be beat. Plus you get to hang out at the pier and soak up the scenery.

» Reggie Crist, self-GoPro capture, on his way to the green room, Napali Coast, Kauai

PHOTOGRAPHER: Reggie Crist



[MEN'S]

[1] TRAVEX® EVERYDAY SHORTS
For beach vacations, days at the lake, or mellow flip-flop strolls, our water-repellent, quick-drying shorts feature a bit of stretch for getting after it on land or in water. Zippered back pocket stows important items securely. Average inseam length of 10" provides surf-short style. UPF 50+. Nylon/spandex.

REG 30, 32-35, 36-40 EVEN B29 122 0660 **\$49.95**
LONG RISE 34-42 EVEN B29 122 0661 **\$54.95**

[2] SOLARFOIL HOODIE
A loose-fitting, breathable UPF 30+ hoodie that shades skin from sun whether in the mountains or on the beach. Oversized hood. See p20 for full description.

[3] TRAVEX ESSENTIAL T-SHIRT
Breathable, quick-dry performance. Moisture-wicking. Cotton/spandex.
REG S-XXL B33 122 8185 **\$24.95**
TALL M-XXL B33 122 8186 **\$27.95**

[4] TEVA® MUSH® II FLIP FLOPS
Contoured Mush topsole. Nylon upper. EVA sole. Sizes 8-15 (whole sizes only). Onyx. B19 122 2788 **\$25**

[5] TRAVEX WAVE BOARD SHORTS
Quick-drying polyester. Interior coin/key pocket; zip security cargo pocket.
REG 30, 32, 33, 34-40 EVEN B29 122 0643 **\$49.95**

[6] RAY-BAN® WAYFARER SUNGLASSES
Timeless style plus reliable sun protection. Plastic frame; UV 400 lenses. Slight wrap. Made in USA. C22 122 2676 **\$145**

A LOOK INSIDE OUR TROPHY CASE

IT'S BEEN A YEAR OF ACCOLADES FOR EDDIE BAUER. BELOW ARE SIX PRODUCTS WE'RE MOST PROUD OF FROM THE PAST YEAR.



ALCHEMIST 40L BACKPACK
2012 OUTSIDE MAGAZINE'S
GEAR OF THE YEAR AWARD

Expands from 40L to 55L for ultimate versatility. Intuitive design with integrated, removable bivy pad, quick-access tool release function, and adjustable load lifters. Exterior gear organizer. Ultralight, water-repellent, and abrasion-resistant ripstop nylon. Patent pending.

C23	122	1793	\$1999
-----	-----	------	--------



GRAY'S BEST

**MICROTHERM™
FEATHERWEIGHT VEST**

GRAY'S SPORTING
JOURNAL'S "GRAY'S
BEST" AWARD

The lightest, warmest hunting layer we've ever built. 800 fill Premium European Goose Down. 40 denier ripstop nylon; CORDURA® nylon shoulder overlay. DWR finish.

REG S-XXXL B38 122 0040 \$149



BC MICROTHERM JACKET 2.0
BACKPACKER MAGAZINE'S
"EDITOR'S CHOICE" AWARD

Full-on, ultralight protection for elevated activity in extreme conditions. Packs into its own pocket. Chest pockets double as heat vents. 800 fill Premium European Goose Down; microchannel quilting for less bulk. Breathable WeatherEdge® Pro. StormRepel® DWR finish. Rated to 20K/20K. Nylon shell.

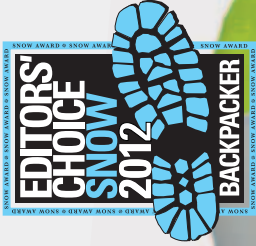
REG S-XXL	B88 122 0531	\$299
TALL M-XXL	B88 122 0532	\$319

TALL M-XXL B88 122 0532

KATABATIC TENT
NATIONAL GEOGRAPHIC
ADVENTURE'S "GEAR OF
THE YEAR" AWARD

Guide built and tested on the world's highest peaks. 2+ person, 4-season expedition tent. 2-vestibule design: double-wall construction. 90"l x 85"W x 48"H, 48 sq. ft. interior; 18 sq. ft. vestibule. Ripstop nylon/polyester mesh/ripstop polyester/nylon taffeta.

N23 122 1753 \$599



**NATIONAL GEOGRAPHIC
ADVENTURE**



**MICROTHERM FEATHERWEIGHT
HUNTING JACKET**
*FIELD & STREAM'S "BEST
OF THE BEST" AWARD*

The lightest, warmest hunting jacket we've ever built.
800 fill Premium European Goose Down. Ripstop nylon/
CORDURA® nylon shoulder overlay. DWR finish.

REG S-XXXL B38 122 0039 \$199

REG S-XXXL B38 122 0039
TALL S-XXXL B38 122 0091





« [WOMEN'S]

[1] AHNU® MONTARA HIKING BOOTS ♦
Waterproof nubuck/suede upper with eVent® membrane. Dual-density EVA midsole. Vibram® rubber sole. Sizes 6-10, 11.
B20 122 5223 **\$150**

[2] SALOMON® XR MISSION TRAIL SHOES ♦
An ideal shoe for road or trail. Sensi-fit technology accommodates for swelling on long runs. EVA midsole. Synthetic upper/rubber sole. Sizes 6-10, 11.
B20 122 4862 **\$110**

[3] MERRELL® BARE ACCESS ARC 2 SPORT SHOES ♦
Synthetic and mesh upper. Merrell Float midsole keeps you in touch with the ground. Vibram rubber sole. Machine washable. Sizes 6-10, 11.
B20 122 5563 **\$90**

[4] SANUK® TRIPPY TOES BALLET FLATS ♦
Woven textile upper/lining. EVA sockliner. Super-flexible rubber sole. Vegan/vegetarian construction. Sizes 6-11 (whole sizes only).
B20 122 5553 **\$50**

[5] AHNU KARMA SLIP-ONS ♦ See p26.

« [MEN'S]

[6] MERRELL GEOMORPH MULTISPORT SHOES ♦
Suede and nubuck upper. Mesh lining with breathable waterproof membrane. Merrell Air Cushion in the heel absorbs shock. Vibram rubber sole. Sizes 8-12, 13, 14, 15.
B19 122 2924 **\$140**

[7] MERRELL MOUNTAIN KICKS CHUKKAS ♦
Nubuck leather/suede upper. Mesh lining; EVA anatomical footbed. Merrell Air Cushion in heel. Sticky rubber sole. Sizes 8-12, 13, 14, 15.
B19 122 3119 **\$110**

[8] SALOMON XR MISSION HIKING SHOES ♦
Synthetic upper with quick-lacing system and small tongue pocket for tucking lace ends. Dual-density EVA midsole. Rubber sole. Sizes 8-12, 13, 14.
B19 122 2660 **\$110**

[9] MERRELL MOUNTAIN MOCS ♦
Nubuck leather/suede upper. Mesh lining. EVA anatomical footbed. Merrell Air Cushion in heel. Sticky rubber sole. Sizes 8-12, 13, 14, 15.
B19 122 3118 **\$95**

[10] KEEN® OWYHEE SANDALS ♦
Washable. Polyester webbing upper. Compression-molded EVA midsole. Rubber sole with multi-directional lug pattern and razor siping. Sizes 8-12, 13, 14, 15.
B19 122 3109 **\$95**

ALL AVAILABLE SIZES & COLORS AT EDDIEBAUER.COM
ALL ITEMS IMPORTED, UNLESS STATED OTHERWISE
♦ CATALOG & EDDIEBAUER.COM ONLY

WANDERING FEET

TRAIL RUNNERS, TRAVEL SHOES, AND LIGHTWEIGHT HIKERS THAT PACK EASILY INTO WEEKEND OR ROUND-THE-WORLD DUFFEL BAGS

OUTDOOR MENTORSHIP ORGANIZATION TEACHES YOUTH THE VALUE OF WILDERNESS STRUGGLE

For many of us, the environment of the outdoors has played a powerful role in the direction of our lives and the empowerment of our souls. Yet, with many economic and geographic barriers, not everyone is granted the perspective of the woods, the rivers, and the mountains. Big City Mountaineers is working to change that by changing young lives with wilderness mentoring programs in six locations throughout the United States.

We first learned of Big City Mountaineers through Eddie Bauer First Ascent guide Ed Viesturs, who champions their mission. This work includes a volunteer contingent of

BCM adult role models who guide young people to increase outdoor activity and overcome challenges on the trail in an effort to teach them to face adversity, make positive decisions, instill character, and find success in life.

The core of the effort is a weeklong wilderness mentoring expedition led by professional instructors where under-resourced urban youths experience powerful, catalyst experiences and gain critical life skills such as conflict resolution. To learn more about Big City Mountaineers and their Summit for Someone program—which offers a VIP fundraising climb of Mt. Hood with Ed himself—visit bigcitymountaineers.org.

EB GIVES BACK 2% OF THE NET SALES FROM THE SPRING OUTFITTER BOOK WILL BE DONATED TO BIG CITY MOUNTAINEERS.

BIG CITY MOUNTAINEERS



PHOTOS: Courtesy of Big City Mountaineers

» Big City Mountaineers' wilderness mentoring program in action



» Wilderness immersion and a helping hand



» BCM's Wilderness Mentoring 101 in Colorado's Rocky Mountains

FINDING FAMILY IN INDIA

THE NORTONS' VACATION ON THE SUBCONTINENT

At first, she was scared. The small, dusty courtyard at the school was alive with interest. There were gaggles of people gawking, touching, reaching, laughing, pinching, inquiring about this strange being in their midst. It was the first time many of them had seen anything like her. Lila—our 14-month-old daughter—was the focus of it all, her bright blond curls matted to her head with sweat from a low-grade fever and the indefatigable heat of coastal West Bengal, as she clutched her prized possession—a tattered Taggies™ blanket—to her chest.

Sagar Island is not the standard vacation spot for those traveling with a toddler. Sitting in the Bay of Bengal, two hours outside of Kolkata, it is a place of reverence for Hindus, an island of beauty and poverty, wildlands and villages—and a focal point of my wife Wende's work with Water For People. It is the latter which brought us

there, combined with a conscious decision to expose our children to the world.

We knew from the start this journey would not be easy, that jet lag, new food, curious people, and strange bugs would combine into a potent stew fit to overwhelm most adults, let alone a young child. But we also knew it would be an important trip, one that would—consciously or unconsciously—build, grow, and shape our daughter's world view.

Wende and I have always been travelers, living and working in many disparate places around the world. As parents, we've made travel a focal point of our parenting: a concerted effort to show our kids not just the beautiful places in our world, but also the beautiful people in it. We've wanted to show them that as different as people may be on the surface, down deep all people are fundamentally the same, whether they live in Golden, Colorado, or South 24 Parganas, West Bengal.

So we've traveled with our kids as much as we can. From India to Costa Rica, Mexico to Borneo, we've tried to get off the beaten track and into the villages and small towns, to find families where we can interact, share the common language of all humanity, and understand both our differences and our similarities.

By the end of that first day on Sagar Island, Lila was speaking. Not in Hindi, not in English, and not even in words. Rather, she was speaking the only way she could... by sharing. Surrounded by hundreds of kids, all jostling for position to see her and touch her, she made a simple gesture of friendship, holding out her Taggie to share with everyone, a delicate smile arcing across her face and mirrored in a hundred more around her. A connection was made. As we pulled away hours later, her small hand touched other hands through the glass of our rusting Jeep. She smiled, they smiled, and Wende and I smiled...it was all worth it.



» Lila Norton sharing her Taggie with new friends on Sagar Island, India



PHOTOGRAPHER: Jake Norton



[MOUNTAIN GUIDES IN TRAINING™]

[1-2] KIDS' RIPPAC RAIN JACKET

Hood with interior side elastic stows away when not needed. Adjustable cuffs. Packs into its own pocket. 2.5-layer polyester shell with durable water-repellent (DWR) finish.

[1] GIRLS' JACKET

XXS-XL B87 122 0056 \$39.95

[2] BOYS' JACKET

XXS-XL B87 122 0069 \$39.95

KIDS' SIZING: XXS=3/4; XS=5/6; S=7/8; M=10; L=12; XL=14

[3-4] KIDS' WEATHEREDGE® RAINFOIL® JACKET

Fully seam-sealed, waterproof, and windproof. Storm flap. Breathable polyester shell with StormRepel® DWR finish.

[3] GIRLS' JACKET

12M, 18M, 2T, 3T B87 122 0282 \$49.95

XXS-XL B87 122 0281 \$49.95

[4] BOYS' JACKET

12M, 18M, 2T, 3T B87 122 0287 \$49.95

XXS-XL B87 122 0286 \$49.95

[5-6] KIDS' TRAVEX® CONVERTIBLE PANTS

Fast-drying and moisture-wicking, with UV protection. Durable water-repellent finish.

[5] GIRLS' PANTS

Roll-up tabs create capris. Nylon/spandex.

XXS-XL B87 122 0065 \$39.95

[6] BOYS' PANTS

Zip-off legs create shorts. Adjustable ankle cuffs. Nylon.

XXS-XL B87 122 0288 \$39.95

[7] KIDS' GRAPHIC T-SHIRT

Soft organic cotton.

XS-XL B87 122 0076 \$16.95

[8-9] KIDS' RIPPAC® WIND JACKET

Wind-resistant. Side elastic on hood interior. Underarm vents. Elastic cuffs. Packs into its own pocket. Nylon.

[8] GIRLS' JACKET

12M, 18M, 2T, 3T B87 122 0055 \$29.95

XXS-XL B87 122 0054 \$29.95

[9] BOYS' JACKET

12M, 18M, 2T, 3T B87 122 0068 \$29.95

XXS-XL B87 122 0067 \$29.95

in your credit report which satisfied our criteria for creditworthiness. If applicable, you must respond by the expiration date of the offer. Credit may not be extended if after you respond, (i) we find that you do not meet the criteria for creditworthiness used to select you for this offer; (ii) you are below the age required to create a valid contract; (iii) we determine that you have fraudulently altered the information provided to us; or (iv) we receive your response to this offer after such offer has expired.

PRESCREEN & OPT-OUT NOTICE *This "prescreened" offer of credit is based on information in your credit report indicating that you meet certain criteria. This offer is not guaranteed if you do not meet our criteria. If you do not want to receive prescreened offers of credit from this and other companies, call the consumer reporting agencies toll-free, 1-888-567-8688; or write to: Experian, PO Box 919, Allen, TX 75013; TransUnion, PO Box 97328, Jackson, MS 39288; Equifax, PO Box 740123, Atlanta, GA 30374.*

Should you later decide that you do wish to receive preapproved offers, you may remove the prohibition on use of your credit report information by notifying the above agencies.

*You can choose to stop receiving "prescreened" offers of credit from this and other companies by calling toll-free 1-888-567-8688. See **PRESCREEN & OPT-OUT NOTICE** above for more information about prescreened offers.*

SPGOUT13-1

SPGOUT13-1

FOLD

FOLD

WE'RE PLEASED TO PRESENT YOU
WITH THIS SPECIAL OFFER

FREE SHIPPING
WITH YOUR \$99 PURCHASE*

This great offer is valid through
Monday, March 4, 2013.

*SEE OTHER SIDE FOR DETAILS.

EST. 1920
Eddie Bauer

PMS 3005 U

SPGOUT13-1

NOW THROUGH MONDAY, MARCH 4, 2013

FREE SHIPPING WITH YOUR \$99 PURCHASE*

BY PHONE

Call 800-426-8020 and mention discount code **B**.

BY MAIL

Enclose this coupon with your order.

ON THE WEB - TRY CATALOG QUICK ORDER

Click on Catalog Quick Order on our homepage at eddiebauer.com. Refer to your catalog to find product details and the 10-digit item number. During checkout, enter **OUTSIDE** in the Promotion Code box on the Promotion & Delivery page.

*Free shipping offer valid at eddiebauer.com or 800-426-8020 through March 4, 2013. Taxes still apply. Offer valid for free standard shipping (7-9 business days delivery to the U.S. only) on orders of \$99 or more after any discount is applied. Offer not valid in Eddie Bauer Apparel stores or at Eddie Bauer Outlet stores. Offer cannot be applied to previous or pending purchases and may not be combined with any other offer.

FOLD

FOLD

GET SPECIAL ATTENTION WITH AN EDDIE BAUER® CREDIT CARD

EDDIE BAUER® CREDIT CARD The Eddie Bauer® Credit Card account is issued by Comenity Bank. For any questions concerning your account, contact Eddie Bauer Cardholder Services at 1-866-507-6744 (TDD/TTY: 1-800-695-1788).

IF YOU ARE PREAPPROVED, THIS IS YOUR OFFER: SEE BELOW FOR OFFER DETAILS. Subject to Credit Approval. There are costs associated with the use of this credit card account. To obtain information about these costs, call us at 1-866-216-4928 (TDD/TTY 1-800-695-1788) or write to us at Comenity Bank, PO Box 182273, Columbus, OH 43218-2273.

IMPORTANT INFORMATION ABOUT OPENING AN ACCOUNT

To help the government fight the funding of terrorism and money laundering activities, Federal law requires all financial institutions to obtain, verify and record information that identifies each person who opens an account. What this means for you: When you open an account, we will ask for your name, address, date of birth or other information that will allow us to identify you. We may also ask to see your driver's license or other identifying documents.

CUSTOMERS RECEIVING PREAPPROVED CREDIT OFFERS

When ordering by phone, you may be selected for a pre-approved account offer based upon the information

SEE REVERSE FOR ADDITIONAL INFORMATION.

SPGOUT13-1

PMS 3005 U

in your credit report which satisfied our criteria for creditworthiness. If applicable, you must respond by the expiration date of the offer. Credit may not be extended if after you respond, (i) we find that you do not meet the criteria for creditworthiness used to select you for this offer; (ii) you are below the age required to create a valid contract; (iii) we determine that you have fraudulently altered the information provided to us; or (iv) we receive your response to this offer after such offer has expired.

PRESCREEN & OPT-OUT NOTICE *This "prescreened" offer of credit is based on information in your credit report indicating that you meet certain criteria. This offer is not guaranteed if you do not meet our criteria. If you do not want to receive prescreened offers of credit from this and other companies, call the consumer reporting agencies toll-free, 1-888-567-8688; or write to: Experian, PO Box 919, Allen, TX 75013; TransUnion, PO Box 97328, Jackson, MS 39288; Equifax, PO Box 740123, Atlanta, GA 30374.*

Should you later decide that you do wish to receive preapproved offers, you may remove the prohibition on use of your credit report information by notifying the above agencies.

*You can choose to stop receiving "prescreened" offers of credit from this and other companies by calling toll-free 1-888-567-8688. See **PRESCREEN & OPT-OUT NOTICE** above for more information about prescreened offers.*

SPGOUT13-2

SPGOUT13-2

FOLD

FOLD

WE'RE PLEASED TO PRESENT YOU
WITH THIS SPECIAL OFFER

FREE SHIPPING WITH YOUR PURCHASE*

This great offer is valid through
Monday, March 4, 2013.

*SEE OTHER SIDE FOR DETAILS.

EST. 1920
Eddie Bauer

PMS 3005 U

SPGOUT13-2

NOW THROUGH MONDAY, MARCH 4, 2013

FREE SHIPPING WITH YOUR PURCHASE*

BY PHONE

Call 800-426-8020 and mention discount code L.

BY MAIL

Enclose this coupon with your order.

ON THE WEB - TRY CATALOG QUICK ORDER

Click on Catalog Quick Order on our homepage at eddiebauer.com. Refer to your catalog to find product details and the 10-digit item number. During checkout, enter **FRESH** in the Promotion Code box on the Promotion & Delivery page.

*Free shipping offer valid at eddiebauer.com or 800-426-8020 through March 4, 2013. Taxes still apply. Offer valid for standard delivery (7-9 business days to the U.S. only) that includes regular-priced or sale-priced items. Offer not valid in Eddie Bauer Apparel Stores or at Eddie Bauer Outlet stores. Offer cannot be applied to previous or pending purchases and may not be combined with any other offer.

FOLD

FOLD

GET SPECIAL ATTENTION WITH AN EDDIE BAUER® CREDIT CARD

EDDIE BAUER® CREDIT CARD The Eddie Bauer® Credit Card account is issued by Comenity Bank. For any questions concerning your account, contact Eddie Bauer Cardholder Services at 1-866-507-6744 (TDD/TTY: 1-800-695-1788).

IF YOU ARE PREAPPROVED, THIS IS YOUR OFFER: SEE BELOW FOR OFFER DETAILS. Subject to Credit Approval. There are costs associated with the use of this credit card account. To obtain information about these costs, call us at 1-866-216-4928 (TDD/TTY 1-800-695-1788) or write to us at Comenity Bank, PO Box 182273, Columbus, OH 43218-2273.

IMPORTANT INFORMATION ABOUT OPENING AN ACCOUNT

To help the government fight the funding of terrorism and money laundering activities, Federal law requires all financial institutions to obtain, verify and record information that identifies each person who opens an account. What this means for you: When you open an account, we will ask for your name, address, date of birth or other information that will allow us to identify you. We may also ask to see your driver's license or other identifying documents.

CUSTOMERS RECEIVING PREAPPROVED CREDIT OFFERS

When ordering by phone, you may be selected for a pre-approved account offer based upon the information

SEE REVERSE FOR ADDITIONAL INFORMATION.

SPGOUT13-2

PMS 3005 U